

~~SECRET~~

APPENDIX E

REPRESENTATIVE TROOP LISTS FOR ALTERNATIVE US DEPLOYMENTS

- E-1 - Troop List I, Current Division Force
- E-2 - Troop List II (Troop List I + 8,500)
- E-3 - Troop List III (Troop List I + 13,101)
- E-4 - Troop List IV (1 Reinforced Div at 90%)
- E-5 - Troop List V (1 Div at 100%)

~~SECRET~~51

930

~~SECRET~~

E-1

TROOP LIST I - SITUATION AS OF JANUARY 1969 ^{1/}
(STRENGTH - US 52,745 KATUSA 11,000)

<u>UNIT</u>	<u>CURRENT STRENGTH(us)</u>	<u>REMARKS</u>
8th ARMY, HQ & HHC	418	(366 Aug.)
8th ARMY SPECIAL TROOPS		
1st DATA PROCESSING DET	47	
2d MI DET (DIV)	26	
7th MI DET (DIV)	26	
8th ARMY BAND	43	
21st TC CAR CO.	45	
38th CBR CENTER DET	5	
40TH ENGR CO. (CORPS TOPO)	60	
55th AVN CO (ARMY)	193	
56th CBR CENTER DET	5	
201st MI DET (CORPS)	49	
284th AVN CO (AIR TRAFFIC CON.)	40	
502d MI BN (FIELD ARMY)	354	
512th MP GUARD PLATOON	17	
523d MP DET (CI)	6	
557th ENGR TERRAIN DET	8	
584th TC INTEL RESEARCH DET	5	
USA FORCES CLAIMS DET	11	
USA KSC CONTROL DET	6	
PROCUREMENT AGENCY	71	
USA PD AGENCY KOREA	10	
USFK NETWORK	101	
8th HONOR GUARD CO.	36	
4th MISSILE COMMAND HQ & HHC	99	(17 Aug.)
4th SUPPORT CO.	75	
1/42 MSL BN (HJ, SP)	293	
161st ENGR CO.	70	
226 SIGNAL CO.	186	
I CORPS HQ & HHC	216	(85 Aug)
I CORPS ARTY HHC	124	(3 Aug)
3D MP DET (DIV)	35	
10th ARMY POSTAL DET	19	
11th ENGR BN (COMBAT)	456	
6/12th ARTY (175G, SP)	359	
1/17th ARTY (8" H, SP)	386	
18th MP DET (DIV)	35	
19th MP DET (CI)	34	
25th CHEM SMOKE GEN CO.	37	
1/25th ARTY (TGT ACQ)	400	
36th ENGR GP (COMBAT) HHC	62	

^{1/} Includes PROVMAAG-K at strength of 1,275 (Army, Navy, AF); does not include 178 MAAG LN Civs.

~~SECRET~~

~~SECRET~~

<u>UNIT</u>	<u>CURRENT STRENGTH</u>	<u>REMARKS</u>
51st SIGNAL BN (CORPS)	924	
54th CBR CENTER DET	5	
55th MP CO.	153	
59th AVN CO (CORPS)	88	
2/76th ARTY (8"H, SP)	386	
3/81st ARTY (SGT MSL)	371	
512th ENGR CO (DUMP TRUCK)	26	
526th ENGR CO (PANEL BRIDGE)	43	
547th ENGR CO (FLOAT BRIDGE)	81	(1 Aug)
633d ENGR CO (LIGHT EQUIP)	135	
5807 I CORPS SPECIAL TROOPS	71	
5803 ENGR SUPPORT DET	6	
5804 ENGR SUPPORT DET	6	
6th AVN PLATOON (AIRLIFT)	87	
2d INFANTRY DIV HQ & HHC	141	(2 Aug)
2d DIV ARTY HHC	165	
2d DIV, 1st BDE HHC	98	
2d DIV, 2d BDE HHC	98	
2d DIV, 3d BDE HHC	98	
2d DIV, SPT CMD HED	76	
2d ENGR BN	725	
2d AVN BN	223	
2d MED BN	274	
2d SUPPLY-TRANS BN	315	
2d MP CO	169	
2d ADMIN CO	344	
4/7th CAV SQDN	569	
1/9th INF BN	654	
2/9th INF BN (MECH)	736	
1/12th ARTY BN (JH)	212	
1/15th ARTY BN (105 H,T)	376	
7/17th ARTY BN (105H, T)	376	
1/23d INF BN	654	
2/23d INF BN (MECH)	736	
3/23d INF BN	654	
6/37th ARTY BN (155H/8" H,T)	489	
1/38th INF BN	654	
2/38th INF BN	654	
5/38th ARTY BN (105H,T)	376	
1/72d ARMOR BN	493	
2/72d ARMOR BN	493	
122d SIGNAL BN	475	
702d DIV MAINT BN	578	

~~SECRET~~

<u>UNIT</u>	<u>CURRENT STRENGTH</u>	<u>REMARKS</u>
7th INFANTRY DIV HQ & HHC	141	(2 Aug)
7th DIV ARTY HHC	165	
7th DIV, 1st BDE HHC	98	
7th DIV, 2d BDE HHC	98	
7th DIV, 3d BDE HHC	98	
7th DIV SFT CQB HHC	70	
7th AVN BN	223	
7th (NR) BN	274	
7th MP CO	169	
7th SUPPLY-TEAMS BN	315	
7th ADMIN CO	344	
2/8th ARTY BN (105 H,T)	376	
2/10th CAV SQDN	569	
13th ENGR BN	725	
1/17th INF BN (MECH)	736	
2/17th INF BN (MECH)	736	
1/31st ARTY BN (JH)	212	
1/31st INF BN	654	
2/31st INF BN	654	
1/32d INF BN	654	
2/32d INF BN	654	
3/32d INF BN	654	
1/73d ARMOR BN	493	
4/76th ARTY BN/105 H,T)	376	
1/79th ARTY BN (105 H,T)	376	
6/80th ARTY BN (155/8" H,T)	489	
127th SIGNAL BN	512	
707th DIV MAINT BN	578	
8th FASCOM		
1st BASE POST OFFICE	96	
2d ENGR CONST GP HHC	41	
2d MP DET (CI)	32	
4th FINANCE DISB. SEC.	66	
4th MAINT BN (DS)	418	
6th AVN DET	2	
7th MP DET (CI)	17	
7th ORD CO (SP AMMO, DS)	195	
8th LOG CMD HQ (SP TRPS)	238	(12 Aug)
8th INVENTORY CON GEN HHC	98	
8th ORD DET (EXPLOSIVE DISP)	10	
13th SUPPLY-SERVICE BN (DS)	319	
19th ARMY POSTAL UNIT	35	
19th AVN CO (MED HELICOPTER)	125	

~~SECRET~~

~~SECRET~~

<u>UNIT</u>	<u>CURRENT STRENGTH</u>	<u>REMARKS</u>
19th GEN SUPPORT GP HHC	80	(123 Aug)
20th GEN SUPPORT GP HHC	81	(152 Aug)
21st DIR SUPPORT GP HHC	62	
21st FINANCE DISB SEC	134	
23d DIR SUPPORT GP HHC	65	(39 Aug)
24th ORD DET (EXPLOSIVE DISP)	10	
25th TRANS MOVEMENT CON HHD	101	
28th TRANS CO (MED TRUCK CARGO)	18	
30th ORD CO (CM, DS)	178	
36th ORD CO (AMMO, DS-GS)	40	
37th ENGR UTILITIES DET	5	
37th HVY EQUIPMENT MAINT CO	124	
38th REPLACEMENT BN	23	
43d TRANS CO. (LT-MED TRUCK)	19	
45th AIRCRAFT CO (GS)	164	
46th TRANS CO. (MED TRUCK CARGO)	66	
55th ORD CO (AMMO, DS-GS)	68	
55th MAINT BN (DS)	327	
58th ORD CO (AMMO, DS-GS)	58	
60th TRANS CO (LT-MED. TRUCK)	53	
69th TRANS TRUCK BN HHD	31	
74th TRANS CO (LT-MED TRUCK)	19	
75th TRANS HVY BOAT CO.	103	
76th ENGR CONST BN	428	
82d SIGNAL DET (SWBD)	20	
83d ORD AMMO BN (DS) HHC	57	
87th ENGR FIREFIGHTING DET.	8	
88th ENGR FIREFIGHTING DET.	8	
89th ENGR FIREFIGHTING DET.	8	
90th ENGR FIREFIGHTING DET.	4	
91st ENGR FIREFIGHTING DET.	4	
98th TRANS. TERM SVC CO.	68	
110th MP CO (PHYSICAL SECURITY)	201	
176th REPLACEMENT CO.	20	
177th REPLACEMENT CO.	20	
199th PERSONNEL SVCS CO.	113	(6 Aug)
202d TRANS TERM BN	46	
239th ENGR FIREFIGHTING DET	8	
240th ENGR FIREFIGHTING DET	8	
249th MP DET (CONFINEMENT)	62	
258th SIGNAL CONSTRUCTION CO.	140	
260th MP CO (PHYSICAL SECURITY)	164	
304th SIGNAL BN (ARMY)	1031	(61 Aug)
335th MAINT BN (DS)	399	
348th SUPPLY-SVC CO (DS)	44	

~~SECRET~~

~~SECRET~~

<u>UNIT</u>	<u>CURRENT STRENGTH</u>	<u>REMARKS</u>
503d ENGR DET (WATER)	4	
503d MP DET	115	
512th HVY EQUIPMENT MAINT CO.	124	
514th TRANS CO (LT-MED TRUCK)	19	
516th LIGHT EQUIP MAINT CO.	196	
593d TRANS CARGO DET (HELICOPTER)	66	
696th ORD CO (AMMO, DS-GS)	47	
728th MP BN (ARMY)	501	
802d ENGR CONST BN	441	
820th MP DOG PLATOON	26	
833d ORD CO (SP AMMO, GS)	160	
8th ARMY DEPOT		
1st FINANCE DISB SEC	36	
2d TRANS TERM CMD HHC	31	
3d AVN DET	38	
44th ENGR CONST BN	425	
52d AVN DET	8	
65th MP DET (CI)	11	
70th TRANS TERM BN HHD	32	
95th TRANS. TERM SVC CO.	75	
117th ARMY POSTAL UNIT	16	
142d MP CO.	153	
609th ORD CO (AMMO, DS-GS)	41	
USA ASCOM DEPOT	555	
8th USA DEP CMD/REAR	468	
INCHON PERTROLEUM DEP	114	
USA CARROLL DEP	663	
USA PUSAN BASE CMD HHD	238	
JOINT SECURITY AGENCY GP	524	(2 Aug)
38th AD BDE HQ & HNB		
7/2d AD BN (HAWK, MBL)	712	
7/5th AD BN (HAWK, MBL)	712	
4/44th AD BN (NIKE-HERC)	1296	
6/44th AD BN (HAWK, FIXED)	712	
2/71th AD BN (HAWK, MBL)	712	
8th ARMY MED CMB		
6th MED DEPOT	127	
10th DENTAL SVC DET	40	
11th EVAC HOSP (SMBL)	53	
43d SURGICAL HOSP (MBL)	98	
44th SURGICAL HOSP (MBL)	99	
65th MED GROUP HHD	33	
106th FOOD INSP SVC DET	49	
119th MED DET	10	
121st EVAC HOSP (SMBL)	233	
125th MED DET	20	

~~SECRET~~

491

~~SECRET~~

<u>UNIT</u>	<u>CURRENT STRENGTH</u>	<u>REMARKS</u>
150th MED DET	14	
160th NEUROSURGICAL DET	6	
168th MED BN IHD	28	
207th DENTAL SVC DET	35	
377th AIR AMB CO.	61	
457 DENTAL DET	4	
462d DENTAL PROS DET	4	
469th DENTAL SVC DET	35	
477 VET ANIMAL HOSP DET	14	
543d GEN DISP DET	32	
544th DISP DET	18	
545th DISP DET	21	
548th GEN DISP DET	42	
560th AMB CO.	66	
567th AMB CO.	66	
618th DENTAL SVC DET	32	
THEATER ATTACHED		
USA STRATCOM (FIELD ARMY) HHD	81	
USA STRATCOM LONG LINES BN (NORTH)	570	
USA STRATCOM LONG LINES BN	343	
USA ENGR DIST FE	63	
177th USASA OPERATIONS CO (P)	357	
226th USASA OPERATIONS CO (K)	102	
USASA GP KOREA HQ	512	
USASA CO (KOREA) (M)	21	
USASA CO (KOREA) (T)	19	
SUPPORT GP DEP HOUSING	152	
PROVMAAG Korea	1275	
UN CMD - KOREA HQ	97	
SVC CO, UNC	145	
USA STRATCOM COMM OPN BN	197	
USA COURIER STA	5	
LOGISTIC MANAGEMENT OFFICE (AMC)	2	
USA ELEM DCA KOREA	5	
457th REPAIR PARTS CO (G-S) FWD	108	
USA CUS ASST OFF KOREA	1	
LOG MSL CMD OFC (AMC)	1	
ELEMENT REDEYE	50	
ELEMENT REDEYE	246	
ELEMENT TAERS	255	
ARMY AUDIT AGENCY KOREA	8	
ARMY ATTACHE	6	
547th PREV MED DET	59	

~~SECRET~~

~~SECRET~~
E-2
TROOP LIST II - JCS PRIORITY I INCREASE
(INCREASE TROOP LIST I BY US 8,500)

<u>UNIT</u>	<u>INCREASE</u>	<u>REMARKS</u>
110th MP CO	114	SECURITY SAD 300
260th MP CO	172	SECURITY SAD 200
I CORPS ARTY HNB	160	SECURITY MASA
4th MSL CMD HNB	25	SECURITY MSA
38th AD BDE HNB	270	SECURITY MSA
2d INF DIV	1,834	RAISE MANNING
7th INF DIV	1,750	RAISE MANNING LEVEL TO 90%
8th ARMY HQ	249	
I CORPS HQ	26	
I CORPS ARTY HNB & 5 BNS	837	RAISE MANNING LEVEL
36th ENGR GP HHC & 5 UNITS	492	RAISE MANNING LEVEL
38th AD BDE HNB & 5 BNS	364	RAISE MANNING LEVEL
4th MSL CMD HNB & 4 UNITS	600	RAISE MANNING LEVEL
502D MI BN	319	IMPROVE INTELLIGENCE PERSONNEL MANNING
2D MI BN	37	"
7th MI DET	37	"
201st MI DET	37	"
51st SIGNAL BN	290	IMPROVE COMMUNICATIONS UNIT MANNING LEVEL
304th SIGNAL BN	128	"
13th SUPPLY-SERVICE BN (DS)	396	IMPROVE MAINTENANCE UNIT MANNING LEVEL
55th MAINT BN (GS)	291	"
45th TC AIRCRAFT MAINT CO (GS)	72	"

~~SECRET~~

E-3

TROOP LIST III - CG. EIGHTH ARMY INCREASE ^{1/}
(INCREASE TROOP LIST I BY US 13,101)

<u>UNIT</u>	<u>INCREASE</u>	<u>REMARKS</u>
8 INF SECURITY CO	1,110	LOCAL SECURITY
2nd INF DIV	1,834	RAISE MANNING 90%
7th INF DIV	1,750	RAISE MANNING 90%
PROJECT "DRINK"	62	INTELLIGENCE
AVIATION REQUIREMENTS ^{2/}	1,337	AVN MODERNIZATION
CHAPARRAL/VULCAN ^{2/}	2,092	ADA MODERNIZATION
MP CO	286	SAD
SIGNAL	502	
HQS	466	
MIL INTELL	430	
AIR DEFENSE ^{3/}	582	RAISE MANNING
ARTILLERY	1,189	
ENGR	607	
SPT UNITS	854	
TOTAL	13,101	

^{1/} Source, Ltr CG, 8th US Army, Subj: OPERATIONAL REQUIREMENT for increased Manpower Ceiling (U), dtd 14 Jan 69.

^{2/} Includes CY69 & CY70 Requirements.

^{3/} Includes HAWK and HERC Fills.

~~SECRET~~ 59

~~SECRET~~

E-4

TROOP LIST IV - REENFORCED INFANTRY DIVISION^{1/}

Reference: Reference Digest, Tables of Organization, 1 July 1968

<u>ORGANIZATION</u>	<u>STRENGTH</u>
Infantry Division w/C/V Battalion	16,863
Infantry Brigade	5,408
Artillery Group	3,220
4th Missile Command	1,153
38th Artillery Brigade	6,475
FASCOM	17,259
Medical Brigade	3,069
Engineer Brigade	6,057
Army Security Agency Group	1,329
Aviation Group	1,597 ^{2/}
Eighth Army Special Troops	1,383
Miscellaneous Units	1,388 ^{3/}
STRATCOM	<u>6,274</u>
	71,475 ^{4/}
TOTAL 100% TOE	64,327 ^{4/}
90% TOE	

- ^{1/} Source CG, Eighth US Army ltr, 28 May 69.
^{2/} Avn Gp has been reduced 40% which will provide 6 companies, 2 Bn Hq, plus spt for lift of 2 Inf Bns.
^{3/} Does not include PROVMAAG-K (Army, Nav, AF) at 1275 strength US.
^{4/} Includes 11,000 KATUSAs at 10% in Div Units; 20% in Spt Units.

~~SECRET~~

E-5

TROOP LIST V - 1 U.S. DIVISION WITH MINIMUM ESSENTIAL
INFRASTRUCTURE AND SUPPORT UNITS (TOTAL SPACES 30,986) ^{1/}

<u>UNITS</u>	<u>STRENGTH</u>	<u>REMARKS</u>
2d INFANTRY DIV HQ & HHC	16,863	(G-SERIES TO&E)
2d DIV ARTY HHC		(Include C/V Rn)
2d DIV, 1st BDE HHC		
2d DIV, 2d BDE HHC		
2d DIV, 3d BDE HHC		
2d DIV, SPT CMD HHD		
2d ENGR BN		
2d AVN BN		
2d MED BN		
2d SUPPLY-TRANS BN		
2d MP CO		
2d ADMIN CO		
4/7th CAV SQDN		
1/9th INF BN		
2/9th INF BN (MECH)		
1/12th ARTY BN (JH)		
1/15th ARTY BN (105, H, T)		
7/17th ARTY BN (105H, T)		
1/23d INF BN		
2/23d INF BN (MECH)		
3/23d INF BN		
6/37th ARTY BN (155H/8" H, T)		
1/38th INF BN		
2/38th INF BN		
5/38th ARTY BN (105H, T)		
1/72d ARMOR BN		
2/72d ARMOR BN		
122d SIGNAL BN		
702d DIV-MAINT BN		
4th MISSILE CV BN COMMAND HQ & HHC	1,267	(Includes Desired AUGMENTATION)
4th SUPPORT CO.		
1/42 MSL BN (HJ, SP)		
161st ENGR CO.		
226 SIGNAL CO.		
38th AD BDE HQ & HHC	5,133	(Includes Desired AUGMENTATION)
7/2d AD BN (HAWK, MSL)		
7/5th AD BN (HAWK, MBL)		
4/44th AD BN (NIKE-HERC)		
6/44th AD BN (HAWK, FKED)		

^{1/} Includes PROVMAAG-K (Army, Navy, Air Force); does not include 11,000 KATUSA or 178 LN Civ with the PROVMAAG-K.

~~SECRET~~

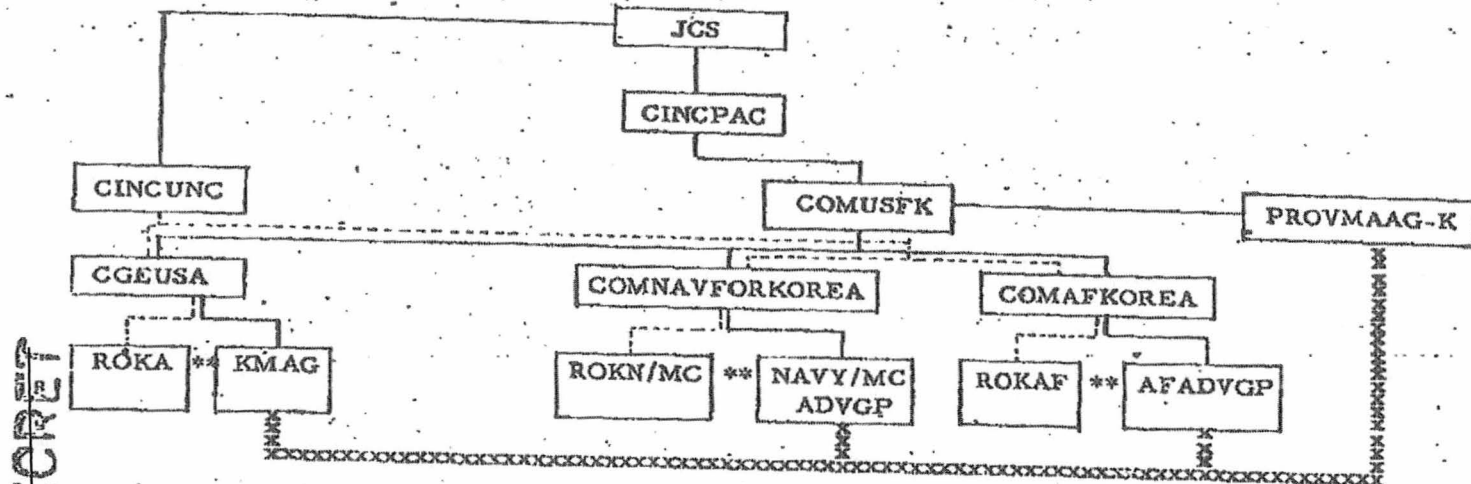
<u>UNIT</u>	<u>STRENGTH</u>	<u>REMARKS</u>
2/71th AD BN (HAWK, MBL)	1,275 ^{2/}	
<u>PROMAAG-KOREA</u>		
<u>INFRASTRUCTURE AND ARTILLERY</u>		
I CORPS ARTY HIB	211	
10th ARMY POSTAL DET	36	
11th ENGR BN (COMBAT)	836	
6/12th ARTY (175G, SP)	359	
1/17th ARTY (8" H, SP)	386	
18th MP DET (DIV)	4	
19th MP DET (CI)	27	
25th CHEM SMOKE GEN CO.	768	
1/25th ARTY (TGT ACQ)	400	
36th ENGR GP (COMBAT)HHC	114	
51st SIGNAL BN (CORPS)	837	
54th CBR CENTER DET	5	
55th MP CO	186	
59th AVN CO (CORPS)	139	
2/76th ARTY (8" H, SP)	386	
3/81st ARTY (SGT MSL)	371	
512th ENGR CO (DUMP TRUCK)	114	
526th ENGR CO (PANEL BRIDGE)	129	
547th ENGR CO (FLOAT BRIDGE)	234	
633d ENGR CO (LIGHT EQUIP)	212	
<u>MAINTENANCE AND LOGISTIC SUPPORT</u>		
1st BASE POST OFFICE	96	
4th MAINT BN (DS)	863	
7th MP DET (CI)	27	
7th ORD CO (SP AMMO, DS)	196	
8th LOG CMD HQ	250	
8th ORD DET (EXPLOSIVE DISP)	10	
13th SUPPLY-SERVICE BN (DS)	403	
36th ORD CO (AMMO DS-GS)	249	

2/ Includes Army, Navy, Air Force MAAG Personnel Minus BALPA II reductions.
Does not include 178 LN Civ.

~~SECRET~~

APPENDIX F
PRESENT ORGANIZATION AND STRENGTH^{1/}

U.S. MILITARY ASSISTANCE TO ROK



SECRET

SECRET

----- Operational Control
 _____ Command
 ***** Advisory
 xoxoxoxoxoxox MA Surveillance for COMUSK

	<u>OFF/WO</u>	<u>EM</u>	<u>US Civ</u>	<u>LN Civ</u>	<u>Total</u>
PROVMAAG-K Hq	28	17	9	5	59
KMAG	262	354	67	24	923
WAG	44	105	1	136	286
AFAG	63	102	7	178	1453 ^{2/}

1/ Source: Study of the Mission, Structure and Organization of MAAG, Korea, Hq, US Forces Korea, dtd. 12 Sep. 68.
 2/ After BALPA II reduction of 414 spsces.

~~SECRET~~

APPENDIX G

SECTION 11

COSTS OF RELOCATION OF DIVISIONAL UNITS WITHIN KOREA

G.1 General

Retention of US divisions in forward locations provides visible expression of the US commitment to support the ROK against aggression. However, relocation of the US forces from their currently exposed "tripwire" positions in the DMZ would permit USG consideration and approval for participation in combat actions rather than an "automatic" and immediate involvement of US troops, in any North Korean attack. Four alternative cases have been considered:

- a. Current deployment of two US divisions; one division on the DMZ and one division in a blocking position north of Seoul;
- b. One division in regional reserve in the vicinity of Suwon - Pyongtaek.
- c. One division in reserve in the vicinity of Taegu-Pusan.
- d. One division in reserve in the vicinity of Seoul (north of the Han River).

In selecting the sites for relocations, existing facilities, LOC's and general regional orientation were considered. It is intended that the alternative locations be considered only as a guide to assist in arriving at a reasonable cost estimate associated with relocation. Precise locations would necessarily be made by the US Commander based on mission, force structure, military impact of relocation and other pertinent criteria.

G.2 Cost of Related Construction

a. Basic consideration. Any significant relocation of either or both of the US divisions within the ROK will require additional construction. This construction will vary in total cost depending upon type of construction (temporary, semi-permanent or permanent) and extent (renovation/expansion of existing facilities or development of new facilities). Current US Army standards (AR 415-30, 30 March 1964, para 9c(2) require semi-permanent construction in overseas areas except where permanent facilities are required by host governments, permanent-type construction materials are economically more available than semi-permanent materials, or where unusual geographic, weather or safety factors make the exception necessary. Various levels of construction costs are estimated for alternate division locations based on an unofficial Office of the Chief of Engineers, US Army "Order of Magnitude Estimating Guide for Permanent Installation Construction Costs" prepared in 1964. Estimates which follow have been adjusted and projected to July 1970 in the ROK. (The 1964 figures are tabulated and then corrected by a cost trend adjustment factor of 1.26 X a geographical cost index for Korea of .8). Construction experts estimate that semi-permanent construction costs are 85% of permanent construction costs. The minimum site requirements for the stationing of one US Army infantry division (para 14, AR 210-30), 6 April 1968 w/Change 1) are:

~~SECRET~~

Cantonment	2,500 acres
Airfield	450 acres
Hospital	50 acres
Ammunition Storage	4,000 acres
Training and service facility	3,500 acres
Subtotal (cantonment and close-in training)	<u>10,500 acres</u>
Firing Ranges	90,000 acres
Maneuver Area (Minimum)	40,000 acres
Subtotal (Ranges and Maneuver)	<u>130,000 acres</u>

Total site requirements for one US
infantry division (minimum) 140,500 acres

These site requirements are valid for an infantry division(s) retained in ROK due to the need to maintain their training status and combat readiness to meet contingencies in ROK and elsewhere in the Western Pacific Region, if the force is a regional reserve. Although stated for one infantry division (based on the current 2d Infantry Division structure of a standard division base plus 6 infantry, 2 mechanized, and 2 armored battalions), the requirements may be multiplied to determine higher requirements for the two divisions. Some consolidation of facilities and joint use by the two divisions may be possible, however, this has not been explored and should not be arbitrarily assumed to be possible without detailed and specific reexamination of minimum essential site requirements, terrain limitations and geographical separation of the divisional sites.

b. Cost Implications

Alternative A - No apparent large-scale construction would be required due to relocation. However, a recent study by USFK, "Construction Requirements Republic of Korea (Complex Review), 1 November 1968", noted that "...a considerable percentage of facilities are to be retained in the present locations during the next five years, renovation or replacement of facilities will be required. The construction costs of Alternative A during FY 70-74 for two US divisions total \$130.1 million. Detailed construction requirements are shown in Table G-1.

Alternative B - Although basic airfield and storage facilities exist in the Suwon-Pyongtaek area, expansion of existing facilities and extensive new construction would be necessary to accommodate the relocated force. The construction costs of Alternative B during FY 70-74 total \$148.5 million for one US division at Suwon/Pyongtaek. Detailed construction requirements are shown in Table G-2.

Alternative C - Airfields, port facilities and storage areas currently exist in the Taegu-Pusan area. In addition to expanding existing support, and transportation facilities, extensive new construction for training facilities, ranges, and cantonment facilities for the regional reserve division would be required. The construction costs of Alternative C during FY 70-74 total

~~SECRET~~

\$141.6 million for one US division at Taegu/Pusan. Detailed construction requirements are shown at Table G-3.

Alternative D - As with Alternative A, no apparent large-scale new construction would be required. However, any existing facilities used would probably have to be renovated or improved and additional training and maneuver areas developed. The construction costs for Alternative D during FY 70-74 total \$81.2 million for one US division in reserve. Detailed construction requirements are shown in Table G-4.

c. Assessment. In terms of construction costs, Alternative B is the most expensive because of the extensive new construction required for the establishment of a US regional reserve in the southern portion of the ROK, especially in the vicinity of Suwon/Pyongtaek. The potential construction costs can be lowered somewhat in Alternative C, by using the existing facilities near Taegu/Pusan requiring renovation, in conjunction with additional new construction. Alternative A shows that it will be more expensive to maintain two divisions with the related renovation of existing facilities than using essentially the same renovated facilities for a smaller number of troops in one division (plus) in Alternative D. Any alternative will require the expenditure of some US funds for construction to improve the living and working conditions for the US forces remaining in the ROK. The amount will be determined by a combination which provides the best politico-military basis for decision consistent with financial constraints on US construction overseas.

~~SECRET~~ 66

~~SECRET~~

TABLE G-1.
ESTIMATED EXPENDITURE OF THE AIR DIVISION CONSTRUCTION AC

CONSTRUCTION CATEGORY	APPROXIMATE SQUARE FEET	CURRENT MARKET	DEFERRED	TOTAL COSTS \$M. (Billions)	FY 69	FY 70	FY 71	FY 72	FY 73	FY 74
1. 110 Performance Facilities	1,010,000 SF	214,817 SF	450,217 SF	41.0	0.0	0.0	0.0	0.0	0.0	0.0
2. 140 Control towers	200,000 SF	117,100 SF	100,000 SF	0.1	0.1	-	-	-	-	-
3. 150 Open storage	1,100,000 SF	265,000 SF	400,000 SF	(Item 1)						
4. 160 Open storage	100,000 SF	25,000 SF	101,000 SF	(Item 1)						
5. 200/240/250 Based aircraft/terminal	70,000 SF	3,300 SF	50,000 SF	(Item 1)						
6. 610 Administrative buildings	307,000 SF	70,000 SF	210,000 SF	21.0	0.3	0.2	0.2	0.2	0.2	0.2
7. 700 class 700 Deep landing	30,000 SF	17,000 SF	14,000 SF	12.0	14.5	14.0	14.0	14.0	14.0	14.0
8. 120/140 Community facilities	1,100,000 SF	600,000 SF	2,500,000 SF	(Item 1)						
9. 800 Misc. facilities (electrical, sewage, water)		(conditioned to each section on Item 1)								
Projected total				121.0	22.2	20.2	20.2	20.2	20.2	20.2
1. 200										
2. 200/240/250 Based aircraft/terminal										
3. 70 (cont-purchase standard)				120.0						
Adjusted projected total for cont-purchase construction to 1974 from 1970										

Units of Measure

SF - square feet
 SQ - square yard
 cu - cubic

*Existing assets = proposed construction FY 69 and FY 70
 -Sponsored facilities = current assets OASD Study 1 Rev 69

TABLE G-2

~~SECRET~~

OFFICE DIVISION OF GENERAL SERVICES, WASHINGTON, D.C.

CONSTRUCTION CATEGORY	EXPIRING	CURRENT YEAR	DEFICIT	TOTAL COSTS (in millions)	FY 70	FY 71	FY 72	FY 73	FY 74
1. 210 Maintenance facilities	300,000 SF	40,000 SF	437,100 SF	40.1	10.0	10.0	10.0	10.0	0.7
2. 210	100,000 SF	2,000 SF	100,700 SF	0.1			0.1		
3. 400 Covered storage	400,000 SF	10,000 SF	410,000 SF	(Item 1)					
4. 400 Open storage	300,000 SF	0	300,000 SF	(Item 1)					
5. 300/300/300 Postal offices/depot	47,000 SF	0	47,000 SF	(Item 1)					
6. 410 Administrative buildings	240,000 SF	0	240,000 SF	33.1	20.1				
7. 700 other 100 Troop housing	10,000 sq	2,000 sq	11,000 sq	70.0	20.1	10.1	10.0		
8. 700/700 Community facilities	400,000 SF	20,000 SF	420,000 SF	(Item 1)					
9. 800 Misc activities	(included in cost estimates of Item 6)								
10. 100 Airfield grounds (Yongsok)	100,000 SF	100,000 SF	0	0.0	2.0				
11. 100 base operations/ facilities (Yongsok)	11,000 SF	10,000 SF	10,000 SF	0.0		0.0			
Unadjusted total			175.3		61.0	24.0	20.0	10.0	0.7
K 1.000 (adjustment factor)									
K .02 (cont.-percentage standard)									
Adjusted, projected total for cont.-percentage construction in FY 70, June 1970			140.0						

30

TABIX C-1

~~SECRET~~

FOR THE RECORDS OF THE NATIONAL ARCHIVES IN THE VICINITY OF TAMPA/ST. PETERSBURG, FL

CONSTRUCTION CATEGORY	1969/70	CURRENT ASSETS	DEFICIT/EXCESS	TOTAL COST (IN MILLIONS)	FY 70	FY 71	FY 72	FY 73	FY 74
1. 110 Maintenance facilities	207,710 SF	426,125 SF	17,000 SF	3.0	3.0				
2. 120 _____	126,126 SF	160,122 SF	112,000 SF	0.1		0.1			
3. 400 General storage	400,000 SF	0	625,000 SF	45.0	0.0	7.0	7.0	7.0	0.0
4. 410 Open storage	512,000 SF	0	320,000 SF	(10.0)					
5. 510/520/530 Rental of buildings	67,000 SF	0	67,000 SF	(1.0)					
6. 610 Administrative buildings	242,500 SF	16,000 SF	303,000 SF	23.0	0.0	0.0	0.0	0.0	0.0
7. 700 thru 750 Army housing	15,000 sq	0	15,000 sq	70.0	10.0	10.0	10.0		
8. 760/770 Community facilities	420,120 SF	0	420,120 SF	(10.0)					
9. 800 Misc utilities	(Included in cost allocation to Item 7)								
10. 810 Airfield pavement (thru)	215,000 SF	150,000 SF	100,000 SF	7.0		0.0			
11. 820 Land operational buildings (thru)	10,120 SF	15,000 SF	3,200 SF	2.0		0.0			
Unexpended cost				177.0	10.0	0.0	7.0	7.0	0.0
1. 1,000 (adjustment factor)				160.0					
2. .65 (land-purchase standard)									
Adjusted, projected cost for non-operational construction to 1974, base 1970				140.0					

~~SECRET~~

TABLE C-5

FOR THE FUTURE REVENUES IN THE UNIVERSITY OF CHINA (ANNEXURE B)

CONSTRUCTION CATEGORY	ESTIMATED	CURRENT AMOUNT	NOTICE DATE	TOTAL COST FOR ESTIMATION	FY 70	FY 71	FY 72	FY 73	FY 74
1. 210 maintenance facilities	210,000 SF	310,717 SF	124,000 SF	41.0	0.4	0.4	0.4	0.4	0.5
2. 100,000 SF	100,000 SF	100,000 SF	65,000 SF	0.4	0.4	-	-	-	-
3. 440 covered ramps	440,000 SF	200,000 SF	210,000 SF (Item 1)						
4. 650 open ramps	100,000 SF	10,000 SF	10,000 SF (Item 1)						
5. 120/140/150 Street widening/repaving	47,000 SF	5,000 SF	42,000 SF (Item 4)	0.3	0.3	0.3	0.3	0.3	
6. 610 Administrative buildings	242,000 SF	70,000 SF	172,000 SF	23.0	15.0	-	-	-	
7. 700 1000 1200 Trump housing	14,000 sq	15,000 sq	11,000 sq	15.0	-	-	-	-	
8. 700/700 Country facilities	400,000 SF	800,000 SF	0	0	-	-	-	-	
9. 800 Misc utilities		(Included in cost estimates of Item 4)		0.7	0.7	0.6	0.6	0.6	
Unfunded total				16.7	16.4	16.6	16.6	16.5	
± 1,000 Construction Cost									
± .45 (cont-purchase costs)				16.2					
Adjusted, projected total for cont-purchase construction to 1974, June 1974									

32

~~SECRET~~

ANNEX III

CHAPTER THREE: ROK AND US AIR FORCES FOR KOREAN DEFENSE

	<u>Page</u>
Appendix A - Background	72
Appendix B - North Korean-CPR Air Capabilities	74
Appendix C - The Republic of Korea Air Force	80
Appendix D - Personnel	88
Appendix E - Aircraft Performance Comparisons	95
Appendix F - Communications	106
Appendix G - Logistics	113
Appendix H - Target Summary	127

~~SECRET~~ 71

~~SECRET~~

APPENDIX A: HISTORICAL BACKGROUND

A.1 Development of the ROKAF

The Republic of Korea Air Force (ROKAF) began with seven aviators and ten L-4 aircraft in 1948. The first flight in aircraft bearing the ROK insignia was made on 13 September 1948. The Army Air Academy was founded in February 1949, and on 1 October 1949, the fledgling Army Air Corps was redesignated the Republic of Korea Air Force. In May 1950, ten T-6 aircraft were purchased from Canada with money donated by the citizens of the ROK. On 25 June 1950, when the North Koreans invaded the ROK, the ROKAF aircraft inventory consisted of the ten T-6 and twelve light liaison aircraft. Starting with ten F-51 Mustang aircraft provided by the U.S., the ROKAF continued to grow and by the end of the conflict had established a good combat record with over 8,000 combat sorties.

The first jet fighters (F-86Fs) were received in June 1955, and in April 1960, receipt of F-86Ds gave the ROKAF their first all-weather capability. In April 1965 the ROKAF received their first F-5 "Freedom Fighter." Spurred by the Pueblo incident, the ROKAF is scheduled to receive one squadron of F-4Ds beginning in October 1969.

A.2 The Korean War

The U.S. Air Forces involved in the Korean War were under the command of Far East Air Forces (FEAF) headquarters. On 30 June 1950, the FEAF command included 33,625 officers and men, most of whom were stationed in Japan and other bases outside of Korea. During the Korean War this force more than tripled to 112,188 officers and men. At the end of the conflict, FEAF controlled 19 air groups and 69 squadrons with 1,536 aircraft. During the conflict FEAF units flew a total of 710,886 sorties, U.S. Navy aircraft flew 167,552 sorties, Marine units flew another 44,873 sorties for a total United Nations air effort of 1,030,614 sorties.

United Nations forces fought the Korean War under conditions of air superiority. Early in the war the Far East Air Forces were able to destroy much of the North Korean Air Forces on the ground. In addition, UN air forces destroyed large numbers of tanks, vehicles, and locomotives, increasing the North Korean difficulty in keeping LOCs open to support the combat forces.

Air interdiction in Korea forced the enemy to rely on primitive transportation systems, ("A" frame-oxcarts) as prime movers of essential materiel. Then, as now in SVN, the cover of darkness was also an important ally to the North Korean LOC net.

~~SECRET~~ 72

~~SECRET~~

A.3 USAF Role in Korea

The Korean War had significant impact on United States Air Forces. At the start of the war, USAF strength was 48 air wings and 416,314 personnel. At the end of the war, the USAF possessed 106 active wings and 977,583 officers and men.

Since the Korean War, the USAF role in Korea has been primarily one of assisting the ROK in developing its own air force. Due to policy considerations, lack of funds, and low technological base, growth has been slow. Over the last decade, there have been only a few USAF aircraft and personnel stationed in Korea. However, there has been a supporting USAF capability nearby in Japan and Okinawa. At the time of the Pueblo incident, there were only a few USAF aircraft in Korea on rotation from Japan. Within several days, the USAF moved approximately 180 tactical aircraft into Korea.

~~SECRET~~ 73

~~SECRET~~

APPENDIX B: NORTH KOREAN - CFR AIR CAPABILITIES

B.1 General

The North Korean Air Force (NKAF) is well organized and presents a formidable defensive force. Subject to certain logistic limitations, the NKAF can also be viewed as a potentially strong offensive force. The primary missions of the NKAF are air defense and tactical air support. About 20% of their fighters have an all-weather capability. Modernization is expected to continue. (See Table 2-B for NKAF fighter/bomber AOB.)

B.2 Force Efficiency

The NKAF has approximately 23,000 military personnel on active duty, all in a state of comparative readiness. All jet fighter bases maintain some aircraft on strip alert and fly daily patrols. During the PUEBLO crisis, the NKAF was able to increase the number of aircraft on ground alert and on day-light airborne patrols.

North Korean pilots have had a number of years training in both MIG fighters and BEAGLE bombers. It is estimated that probably as many as 70 North Korean pilots have received combat experience in flying MIG-15/17s and MIG-21s in North Vietnam. Fragmentary evidence suggests that North Korean fighters have conducted offensive fighter-bomber operations in conjunction with North Korean BEAGLE bombers.

NKAF IL-28 pilots are believed to be proficient in both high and low level bombing operations, and indications are that they occasionally recover in China. Some air exercises indicate that the NKAF has involved as many as 150 or more fighters and bombers in simulated operations for three or four days at a time. NKAF BEAGLES have been noted conducting short over-water flights in recent years, and often appear to act as targets for simulated MIG interceptors in air defense exercises. 50X1

50X1

The BEAGLES are estimated to have a good capability to perform ECM against the South Korean air defense system. 50X1

50X1

~~SECRET~~ 74

~~SECRET~~

B.3 Airfield Facilities. (See Table B-1)

The North Korean Air Force currently operates from 11 active bases, and in emergency conditions can deploy to a total of 18 airfields. The additional seven facilities include two widened highways which may be utilized for jet-capable dispersal or recovery bases in emergency situations.

TABLE B-1

NORTH KOREAN AIRFIELD FACILITIES

<u>AIRFIELD</u>	<u>RUNWAYS ^{1/}</u>	<u>TYPE</u>	<u>DISP NEAR</u>	<u>CAVES</u>	<u>REVT- MENTS</u>	<u>SA-2</u>	<u>AAA</u>
Changjin-up	2 - Unk	Disp/Recov		3	--	--	--
Chongin	Unk	Disp/Recov		--	--	--	--
Hwangju	3/5 - 6600 C	Tact, Jet	X	3	--	X	X
Hoemun Ni	2 - 6500 C	Jet Trng		--	--	--	--
Namsi ^{2/}	3 - 6600 C	Disp/Recov	X	3	X	--	X
Onchan-Up	2 - 7000C	Tact, Jet	X	--	--	X	--
Pukchang-Ni	4/6 - 8200 C	Tact, Jet	X	7	--	X	X
Pyong-Ni	3 - Unk	Disp/Recov	X	--	X	X	X
Pyongyang E	3 - 6000 C	Civilian	--	--	--	X	X
Saamchan	2/3 - 8200 C	Tact, Jet	X	6	--	X	X
Simmusong	2 - 10,900 C	IL-28	--	--	--	--	--
		Disp/Recov					
Sondong Ni	3/4 - 6600 C	Tact, Jet	X	--	--	X	X
Sunan-Up	2 - 8200 C	Tact, Jet	X	--	X	X	--
Taechon	2 - 6500 C	Disp/Recov	--	--	--	--	--
		AN-2, LI-2, MI-4					
Uiju	3 - 8000C	IL-28	X	X	X	--	--
Wonsan ^{3/}	5/7 - 6600 C	Tact, Jet	X	3	--	--	--
Chasan ^{4/}	1 - Concrete	Disp/Recov	--	--	--	X	--
Sunan ^{4/}	1 - Concrete	Disp/Recov	--	--	--	X	--

^{1/} Longest runway listed - C = concrete

^{2/} Underground assembly plant

^{3/} Hardened hangars

^{4/} Highway airfields

~~SECRET~~