

August 2016

Women's Equality Week Program *Powerful Solutions: When Women Lead* Panel Discussion

On **Tuesday, August 23, at 6:30 p.m.**, the National Archives at Kansas City will present, in partnership with the American Association of University Women - Kansas City Chapter, a panel discussion program titled ***Powerful Solutions: When Women Lead***. A free light reception will precede the lecture at 6:00 p.m.

This past month, the United States witnessed the first ever presidential nomination of a woman by a major U.S. political party. More than ever in American history women are opting to run for elected office at local and state government levels. A greater number of women are serving in leadership positions across nonprofits and in the corporate sector. This program will examine the historical beginnings of women in leadership and will discuss why having women in leadership positions can be a game changer for a variety of reasons. In addition, panelists will discuss the challenges and successes of what can happen when women take on positions within an organization that may have historically been held by men.



Above original caption: Washington, D.C., Feb. 7, 1939. Jeanette Rankin, first woman member of Congress, told the Naval Affairs Committee for the House today that there is 'much technical opinion within the Navy Department against the fortification of Guam as there is for it', and that the reason that the committee had not heard such opinions is because, 'announcements of policy come only from the top.' Miss Rankin voted against U.S. entrance into the World War. Image courtesy of the Library of Congress Prints and Photographs Division Washington, D.C., LC-DIG-hec-26014.

Reservations are requested for this **free program** by calling 816-268-8010 or emailing kansascity.educate@nara.gov. Requests for ADA accommodations must be submitted five business days prior to events.

Facility Information for the National Archives at Kansas City

- Renovations will continue through August at the National Archives. Currently work is being done to update and upgrade the public exhibit galleries, hospitality areas, and educational learning center. During this work, the Research Rooms will be open for regular business hours. In addition, public programs will continue to be offered. The National Archives' normal business hours are Monday - Friday, 8:00 a.m. to 4:00 p.m.
- During 2016, the National Archives at Kansas City will serve as a polling location for some residents in Kansas City, Missouri. Higher than average foot traffic will be expected and parking may be limited. The facility will have extended hours except for the Research Rooms. Researchers and regular visitors should note the following upcoming polling dates and hours: **Tuesday, August 2, 2016** and **Tuesday, November 8, 2016** from 6:00 a.m. - 7:00 p.m.

Inside This Issue

FACILITY INFORMATION	1
HIDDEN TREASURES FROM THE STACKS	2-4

Upcoming Events

Unless noted, all events are held at the National Archives 400 West Pershing Road Kansas City, MO 64108

- AUGUST 23 - 6:30 P.M.
PANEL DISCUSSION:
WOMEN'S EQUALITY
WEEK ANNUAL
PROGRAM

Save the dates for the following programs, additional details will be in the September issue:

- SEPTEMBER 7 - 6:30 P.M.
AUTHOR EVENT: *HARVEY HOUSES OF KANSAS*
- SEPTEMBER 13 - 6:30 P.M.
MODERATED DISCUSSION:
FIDES ET LABOR - 140 YEARS OF PIONEERING EDUCATION: THE STORY OF PARK UNIVERSITY
- SEPTEMBER 15 - 6:30 P.M.
MODERATED DISCUSSION:
IKE, HARRY, AND THE CONSTITUTION

Hidden Treasures from the Stacks

Operation Sentinel II: Testing Civil Defense during the Cold War

"[Civil defense is] insurance for the civilian population in case of an enemy miscalculation. It is insurance we trust will never be needed – but insurance which we could never forgive ourselves for foregoing in the event of catastrophe." – President John F. Kennedy

While response planning for natural disasters and terrorist attacks is a focus in the United States today, during the Cold War concerns fell primarily on the risk of nuclear attack. As tensions with the Soviet Union escalated, the United States turned its focus to nuclear emergency preparedness and recovery activities. At the national level, the Federal

government initiated a comprehensive civil defense program to address planning and preparation needs, which encompassed public education programming, evacuation strategy, continuity of operations, and post-attack survival projections. To test the various program elements, drills and exercises became common practice.

Over a three-day period in October 1957, the Federal Civil Defense Administration (FCDA) carried out a civil defense exercise called "Operation Sentinel II." Representatives from city, county, state, and Federal agencies participated in the exercise which was geared at determining the impact on food resources following a nuclear attack on United States soil. In contrast to the various "Operations Alert" held 1955-1962 which were intended to gauge preparedness and provide a realistic training environment for citizens and public officials, the participants in "Operation Sentinel II" analyzed post-attack scenarios and outlined necessary actions to be taken to restore desirable conditions.

(For Exercise Purposes Only)
(Not for Release)

- 29 -

ANALYSIS PHASE OF THE EXERCISE

A. Determine or estimate the quantities and character of usable food stocks in the "exercise area" on D plus one day.

NOTE: "Exercise area" is described and defined in Part V. Quantities of food should be determined or estimated in such general terms as "gross consumable tons." "Character" of food might include such distinctions as: perishables versus non-perishables; staples versus luxury foods; calorie or protein measurement, etc. No attempt should be made to provide overly exact or technical analysis, since the purpose is only to get an estimate of general availability.

B. Determine or estimate quantities of food in the "exercise area" consumed or dissipated from D Day to D plus seven days.

NOTE: Data should be in the same form as in "A" above. "Consumed or dissipated" includes foods eaten, spoiled, wasted, lost, etc.

C. Determine or estimate the prospect for augmentation or replenishment of food (amount and character) from sources within the "exercise area" in the next month, six months, and beyond one year.

NOTE: This should include such factors as production, conversion, substitution and recovery.

D. Determine or estimate the prospect of augmentation or replenishment of food supplies from sources exterior to the "exercise area," for the same time periods.

NOTE: This should be a general evaluation of the relative effects on food in other areas as compared to that in the area under consideration.

E. Identify possible sources and amounts of unconventional food stuffs.

(For Exercise Purposes Only)
(Not for Release)

FCDA BC 26491

Above: After receiving the details of a post-attack scenario, participants in Operation Sentinel II worked through an analysis exercise. Record Group 79, National Park Service Region II, Civil Defense Files, 1951-1957 (National Archives Identifier 4709037).

(Continued on next page.)

(Continued from page 2.)

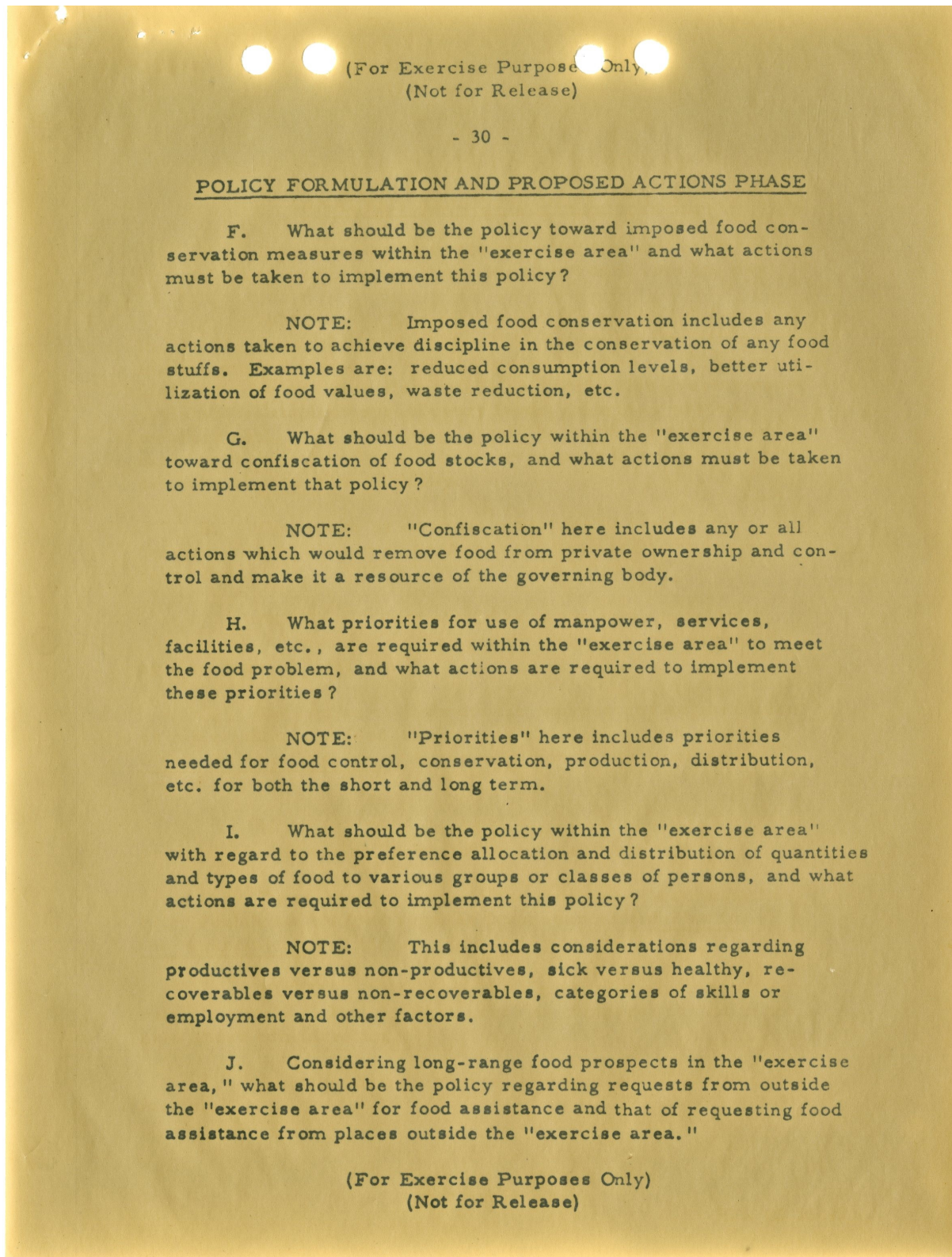
Cities across the United States were selected as "Focus Communities" that were to serve as model Ground Zero locations for the purposes of the exercise. Among these cities was Salina, Kansas, a community located in Region 6 of the FCDA.

Approximately 70 participants from agencies across Region 6 worked to estimate the quantities and character of usable food stocks in the region, determine changing caloric needs for survivors, and make suggestions for augmentation or replenishment of food using both local and outside sources. Recommendations were provided for extending availability of supplies over potential weeks and months of need, and unconventional sources of food were considered. Both health and morale were factors in determining potential community needs after fallout.

Participants in the exercise were provided with three detailed scenarios which guided their analysis work and

policy formulation activities. The activities asked participants to consider local policies regarding food conservation; confiscation of food stocks; manpower, services, and facility requirements/priorities; food allocation and distribution; and requests for assistance from outside the region. When developing these prospective policies, participants were additionally tasked with considering both the impact on national plans as well as the needed assistance in execution that such policies would require at the national level.

(Continued on next page.)



Above: The final task assigned to Operation Sentinel II participants was policy formulation. Record Group 79, National Park Service Region II, Civil Defense Files, 1951-1957 (National Archives Identifier 4709037).

(For Exercise Purposes Only)
(Not for Release)

-39-

PART VII. REGIONAL ASSUMPTIONS

- A. Situation No. 1: A Direct Attack Was Made On The "Focus Community", Salina, Kansas. (Kansas City, Kansas, also Attacked) See Map No. 1.
1. At 8:00 a.m., volunteer evacuation was recommended and begun.
 2. At 12:00 noon, the evacuation signal sounded.
 3. At 2:45 p.m., the "take cover" signal sounded.
 4. At 3:00 p.m., Salina and Kansas City were attacked.
 5. At attack time, 85% evacuation had been achieved.
 6. Fifteen percent of the Salina and Kansas City Evacuation Area were killed.
 7. A state of Civil Defense Emergency (Title III) was declared by the President on the day of the attack.
 8. Casualties at D / 7 were as follows:
 - 15% dead in the evacuation areas due to blast and thermal effects
 - 7% dead in the fallout areas (including some evacuees) due to radiation
 - 16% injured in the fallout areas due to radiation.
 9. The 1950 Census is used as the basis for population figures during this exercise.
 10. The "Exercise Area" has sufficient radiological defense capability to permit accurate evaluation of the radiological situation.
 11. Food requirement for survival is 3 pounds (2200 calories) per person per day.
 12. At D / 30 days, 20% of the evacuated population re-entered their home communities, except those in the fallout area.

(For Exercise Purposes Only)
(Not for Release)

(Continued from page 3.)

Correspondence relating to "Operation Sentinel II" can be found at the National Archives at Kansas City within Record Group 79, Records of the National Park Service (NPS). Region II of the NPS was based out of Omaha, Nebraska, and was tasked with documenting regional coordination of activities and contingency plans for mobilization of civil defense procedures.

To learn more about these records please visit the [National Archives](#)

Left: Participants in Operation Sentinel II received one of three post-attack scenarios and were provided documents detailing correlating assumptions. This document outlines the aftermath of a direct attack on Salina, Kansas. Record Group 79, National Park Service Region II, Civil Defense Files, 1951-1957 (National Archives Identifier 4709037).



NATIONAL
ARCHIVES

KANSAS CITY

HOURS OF OPERATION: Monday through Friday 8:00 a.m. to 4:00 p.m. Closed on weekends and Federal holidays. Hours are subject to change due to special programs and weather. The National Archives is located at 400 West Pershing Road, Kansas City, Missouri, 64108.

The National Archives at Kansas City is home to historical records dating from the 1820s to the 1990s created or received by Federal agencies in Iowa, Kansas, Minnesota, Missouri, Nebraska, North Dakota, and South Dakota.

For more information, call 816-268-8000, email kansascity.educate@nara.gov or visit www.archives.gov/kansas-city. Find us on Facebook www.facebook.com/nationalarchiveskansascity. Tweet us @KCArchives or #KCArchives.