



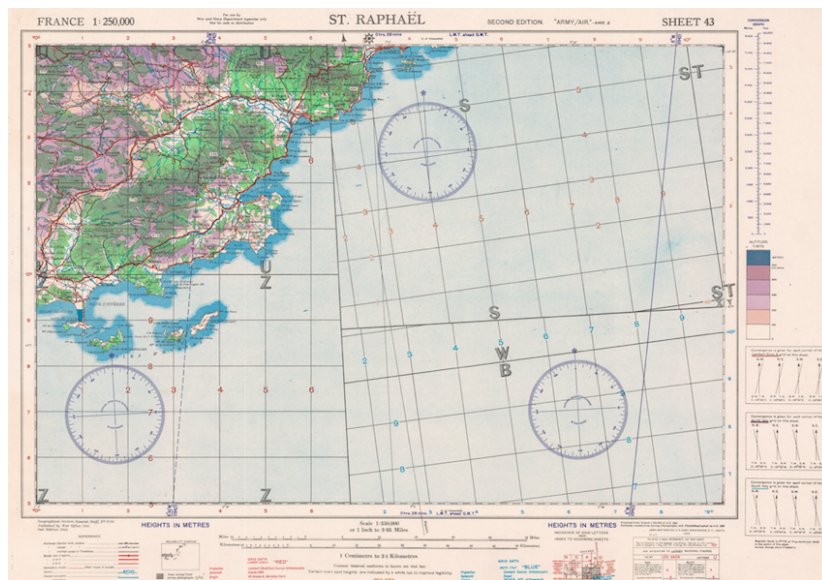
CATALOG

[View email in your browser](#)

[Share this email with a friend](#)

You Are Here: Maps in the Catalog

Ahoy! This week we're charting a course through the [cartographic holdings at the National Archives](#).



Map of St. Raphael, Italy. [National Archives Identifier 200235283](#)

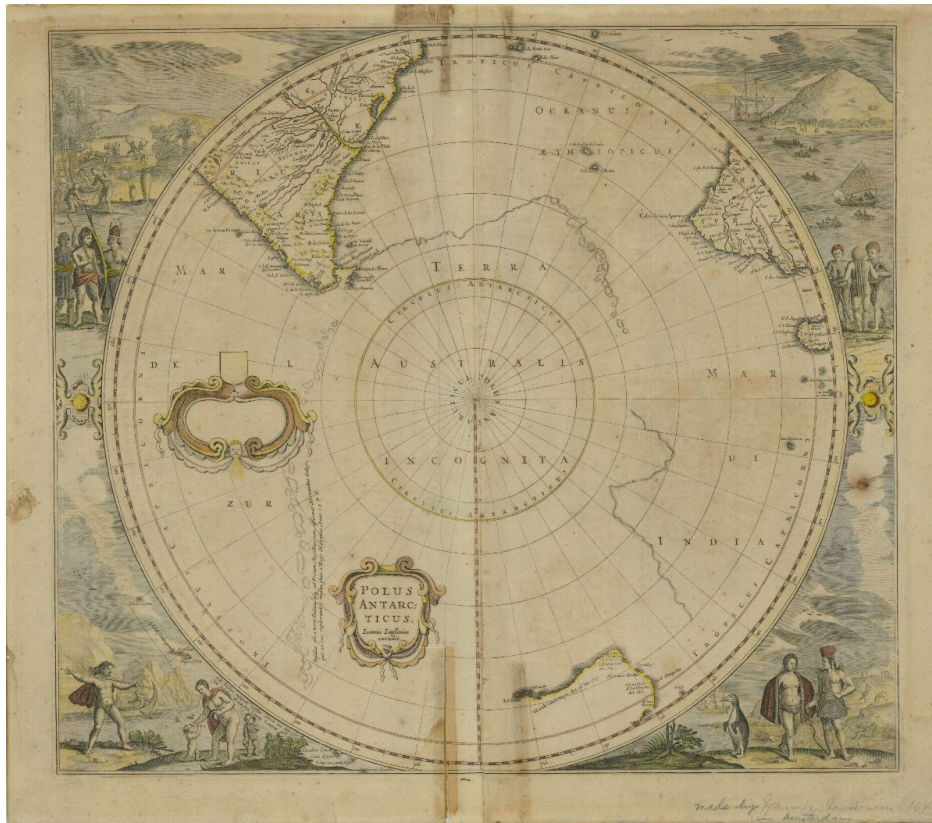
More than 15 million maps, charts, aerial photographs, architectural drawings, patents, and ship plans can be found in the [cartographic and architectural holdings](#) in College Park, Maryland.

The most recent [Archives Hashtag Party](#) hosted by the National Archives invited libraries, archives, and museums around the globe to feature some of their favorite maps and map-related records in [#ArchivesYouAreHere](#). Jump on board with us as we navigate a selection of our favorites in this week's newsletter!



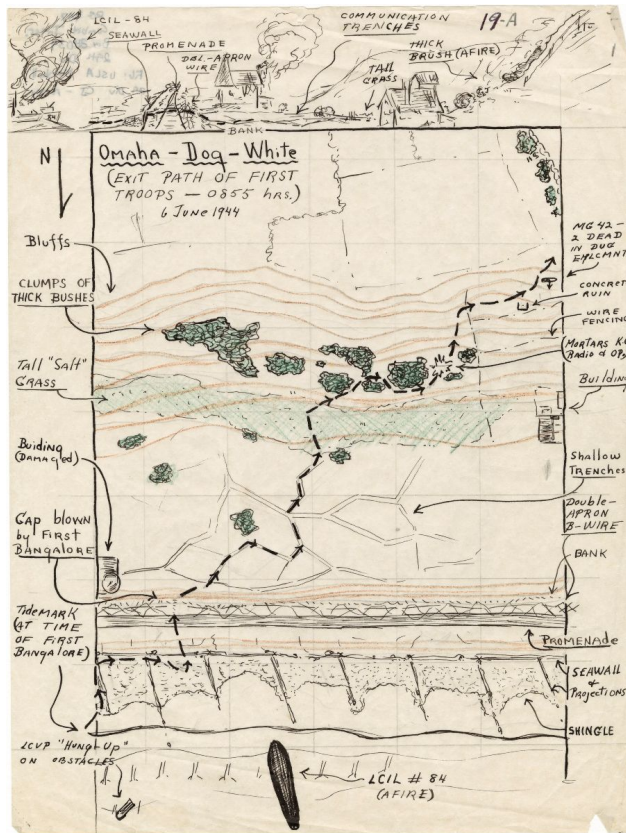
Camouflage Design for Cargo Ship. [National Archives Identifier 6997120](#)

One of the oldest items in our Cartographic holdings is the Polus Antarcticus atlas page. Published in the 1630s by Henricus Hondius, a Dutch cartographer and engraver, the map is one of the first to depict the South Pole area. Learn more on the Unwritten Record blog, [Chronicling Cartographic's Oldest Record: The Polus Antarcticus Map.](#)



Polus Antarcticus Illustrated Atlas Page, ca. 1649. [National Archives Identifier 70187161](#)

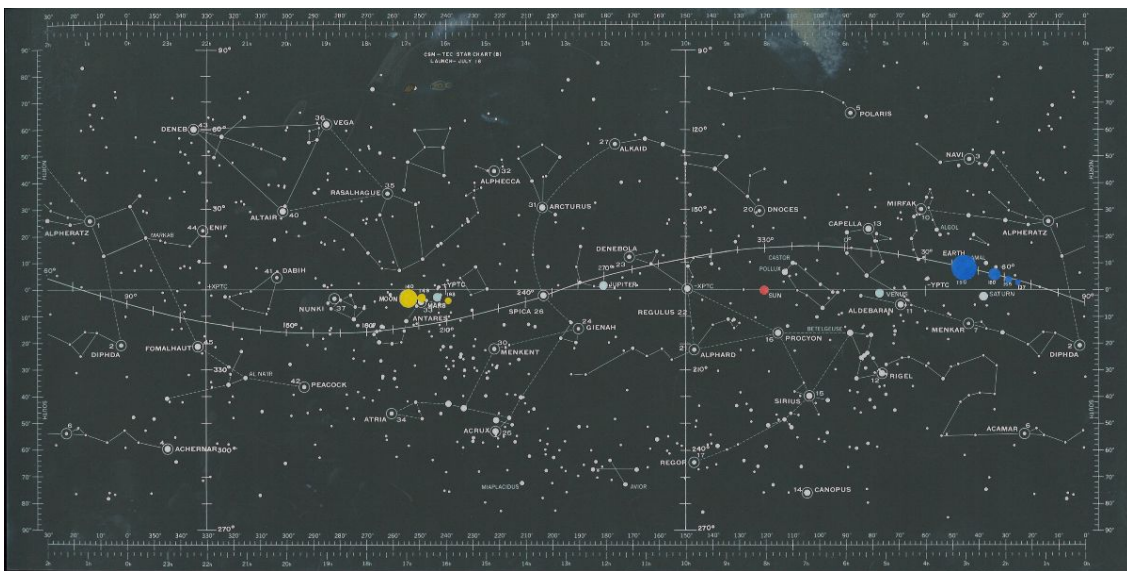
This sketch is illustration 19a from the 29th Infantry combat narrative by Lieutenant Jack Shea. The hand-drawn map representing the Normandy Invasion on June 6, 1944 shows the exit path of first troops, 0855 hrs, on Omaha Beach.



Omaha-Dog-White, Exit Path of First Troops, 0855 Hrs., 6/6/1944. [National Archives Identifier](#)

[6922052](#)

One of our favorite maps isn't even of Earth: this star chart was used by the crew aboard Apollo 11.



Star Chart from Apollo 11. [National Archives Identifier 4958425](#)



Bombardier Lt. Plummer points out a hole in his Boeing B-17 Flying Fortress as he holds a damaged map. The holes were caused by flak that entered the plane, hit the bomb release switch, and dropped the bomb on the target below!

The original caption notes "This is probably the first time the Germans ever helped bomb themselves." Plummer had just turned to speak to the navigator when the flak came through--a move that saved him from severe injury. [National Archives Identifier 193731632](#)

During World War I, French cartographers, part of the Service Géographique de L'armée, made maps in Paris. Our Still Picture Branch holds photos showing this part of the cartographic process. In this 1918 photo, a map of Le Bonhomme is made using a wet collodion plate. A copy of this very map is also part of our WWI cartographic records. [National Archives Identifier 55204873](#)



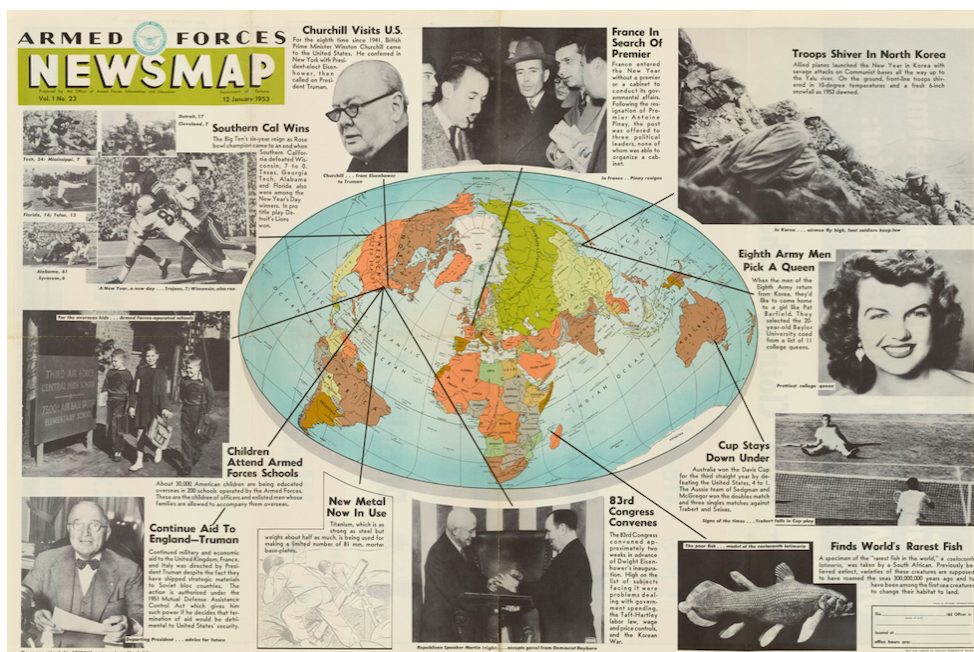
Street signs are very important to know

where you are! This National Youth Administration worker assembled street signs in Easthampton, Massachusetts, in 1941. [National Archives Identifier 7350925](#)



"Newsmap," originally published weekly by the U.S. Army, was distributed to the military with news about World War II and the Korean War.

The front of each issue was usually a large map surrounded by news stories, smaller maps, and photographs. [National Archives Identifier 66395583](#)



An Officer Of The 410Th Bomb Group Points To A Wall Map Showing The Target Of The Day During Briefing At A 9Th Air Force Base, England, 25 July 1944. [National Archives Identifier](#)



How do I search the Catalog for maps and charts?

It is best to search the [Catalog](#) for a topic, name or phrase and then narrow down the search results using filters. You may need to do several different searches to find the records you are interested in.

- You can review our [Catalog Search Tips](#)
 - If you are looking for a name or phrase, put those terms in quotations for the search, example “New York”
 - Search results bring back all formats of records. Use the filters on the left side to narrow your results to **Maps and Charts**
 - Not all of the descriptions in the Catalog include digitized records. To see those that have digital images in the Catalog, after conducting a search, use the filter on the left side to narrow your results to **Archival Descriptions with Digital Objects**
 - If you find a record you'd like to use, you can download it. For a video tutorial, please see [How to Download Records from the National Archives Catalog](#)
 - If you have a question about a description in the Catalog, reach out to the reference staff listed in the Contact(s) section.
-



Battleship Disguised as an Island. [National Archives Identifier 6997114](#)

Learn more about the cartographic records held at the National Archives:

- [Cartographic and Architectural Records at the National Archives in College Park, MD](#)
- [Maps of the Great War: Army Cartography in World War I – The Unwritten Record blog](#)

Archives Hashtag Party

We hope you enjoyed this week's newsletter, inspired by our most recent Archives Hashtag Party! You're always invited to join the party with us on social media. Follow the National Archives on [Twitter](#) and [Instagram](#) as we share highlights from collections around a different theme each month. Check out the [archives, libraries, galleries, and museums participating so far](#), and join us for the next party on Friday, April 2 for [#ArchivesTipOfTheHat!](#)

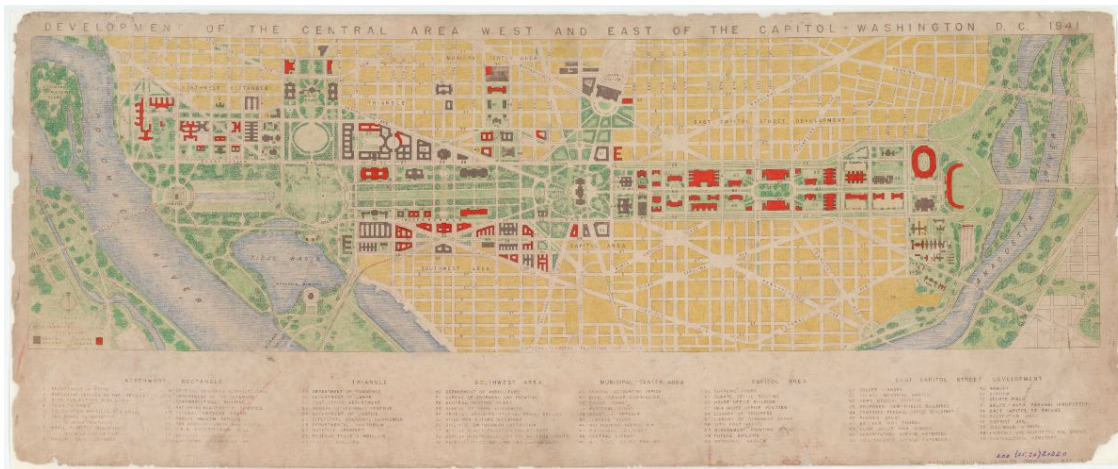
Start your research on History Hub

Have a question? [Find your answer on History Hub!](#)

For those looking to conduct research or learn more about Cartographic and Architectural records and resources, we encourage you to browse recent posts and questions on History Hub. Recent posts include:

- [Researchers Help: Researching USGS Aerial Photo...](#)
- [I'm interested in looking at old maps at the National Archives. How do I do that?](#)
- [Seek ship plans for USS Frederick C. Davis \(DE-...](#)
- [Where can I find a map of WWII theaters for re-use \(public domain\)](#)
- [1852-Fort Headquarters Building Size](#)
- [Understanding WWII military map coordinates/ locating WWII maps?](#)
- [Seeking Aerial Photographs of Belgium](#)
- [Seeking Maps of Colonial New York City](#)

History Hub is our support community for researchers, genealogists, history enthusiasts, and citizen archivists. Ask questions, share information, work together, and find help based on experience and interests. Researchers can ask—or answer—questions on [History Hub](#), or search to see if a question has been asked before.



Proposed Development of the Central Area West and East of the Capitol. [National Archives Identifier 6087998](#)

COVID-19 Update

The National Archives is committed to the health and safety of our visitors and staff. We are closely monitoring the situation regarding COVID-19, and we are working with public health officials and our counterpart agencies to monitor and respond to the evolving conditions and following CDC guidelines.

For more information, visit <https://www.archives.gov/coronavirus>

Questions or comments? Email us at catalog@nara.gov.



[Privacy policy](#)

[Subscribe](#) or [Unsubscribe](#)

Powered by [Mailchimp](#)