



2022 Genealogy Series: 1950 Census

Welcome!

The National Archives and Records Administration (NARA) is pleased to present this educational series of lectures on how to do family research.

As one of the nation's premier genealogy institutions, it is our mission to inform the public about National Archives' holdings that relate to family history and to make those records available to you.



NATIONAL ARCHIVES
1950
CENSUS
EXPLORE & COLLABORATE



About the Lecture Series

These lectures will demonstrate how to use records from the 1950 Census and other federal resources for genealogical research. Our presenters include experts from the National Archives and Records Administration and the U.S. Census Bureau. Sessions are intended for beginners to experienced family historians – all are welcome!





Join the conversation!

Participate with the presenters and other family historians during a session's premiere.

Live Chat on **You**  **Tube**

Log in and type your questions and comments.

Join us at **@USNatArchives**

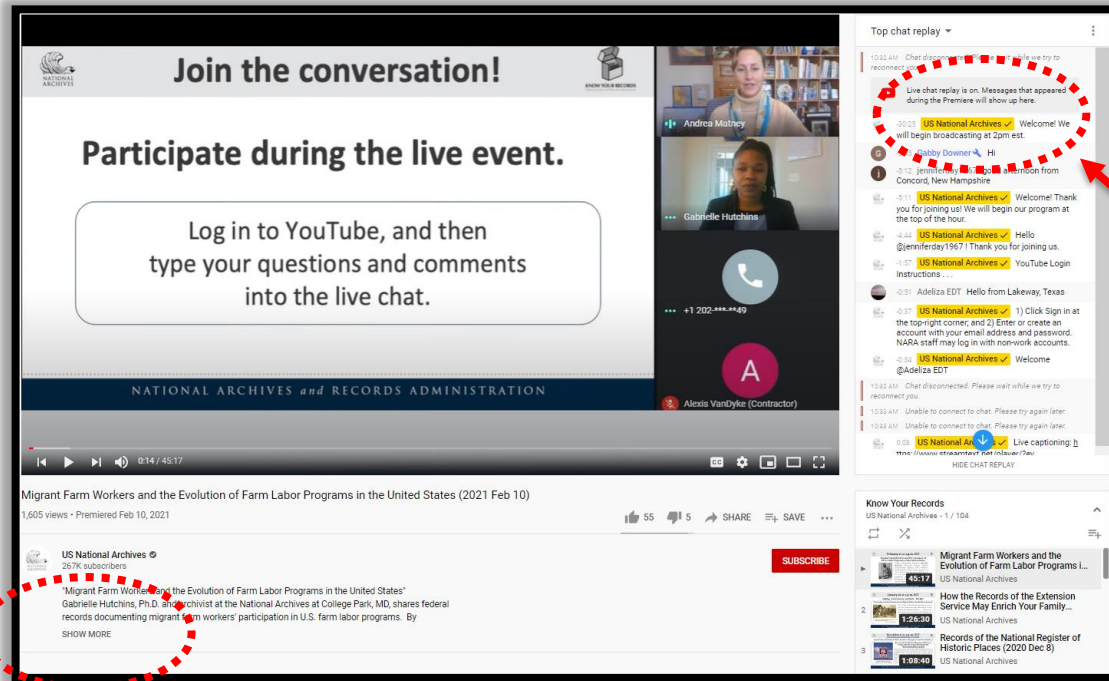
on  **#GenieSeries2022**



Instructions

Show More

- captioning
- handout
- evaluation



Chat

- log in
- participate
- ask questions

After the broadcast, the video presentation and handout will remain available.





March-April Schedule

- | | |
|------------------------------|-------------------------------------------------------------------------------------------------------------------------------------------------------------------------------------------------------------------------|
| March 2
1 p.m. ET | Overview of What's on the 1950 Census
Claire Kluskens - Genealogy/Census Subject Matter Expert and digital projects archivist
National Archives in Washington, DC |
| March 16
1 p.m. ET | Mapping the 1950 Census: Census Enumeration District Maps at the National Archives
Brandi Oswald - Supervisory archivist, Cartographic Branch
National Archives at College Park, MD |
| March 30
1 p.m. ET | The 1950 Census Website: Design, Development, and Features to Expect
Michael L. Knight - Web Branch Chief, Office of Innovation (Digital Engagement Division)
National Archives at College Park, MD |
| April 27
1 p.m. ET | The Story of the 1950 Census P8 Indian Reservation Schedule
Cody White - Native American-Related Records Subject Matter Expert and archivist
National Archives at Denver, CO |





May Schedule

- | | |
|----------------------------|------------------------------------------------------------------------------------------------------------------------------------------------------------------------------------------|
| May 11
1 p.m. ET | From Parchments to Printouts: History of the Census from 1790 to 1950
Sharon Tosi Lacey - Chief Historian
U.S. Census Bureau |
| May 18
1 p.m. ET | History of Census Records and the National Archives
Jessie Kratz - Historian of the National Archives
National Archives in Washington, DC |
| May 25
1 p.m. ET | Historic Census Bureau Sources for Filipino, Guamanian and Chamorro, American Samoan, and Native Hawaiian Research
Christopher Martin – Historian
U.S. Census Bureau |





Mapping the 1950 Census:

Census Enumeration District Maps at the National Archives

A census enumeration district was an area that could be covered by a single enumerator, or census taker, in one census period. Enumeration districts varied in size from several city blocks in densely populated urban areas to an entire county in sparsely populated rural areas. This presentation will focus on locating and using census enumeration district maps, with an emphasis on maps from the 1950 census.





Presenter Biography



Brandi Oswald

Brandi Oswald is a supervisory archivist in the Cartographic Branch at the National Archives at College Park, MD. She started with the National Archives in 2015 as an archives technician and joined the Cartographic Branch in 2016. Brandi holds a masters of arts degree in public history from West Virginia University and a bachelors of arts degree in history and anthropology from Heidelberg University.





NATIONAL
ARCHIVES

Research Services

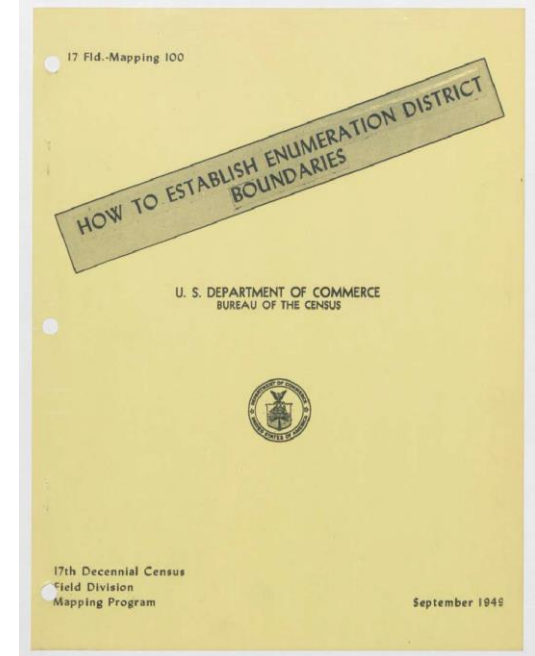
Mapping the 1950 Census: Census Enumeration District Maps at the National Archives

Brandi Oswald

March 16, 2022

What is a Census Enumeration District?

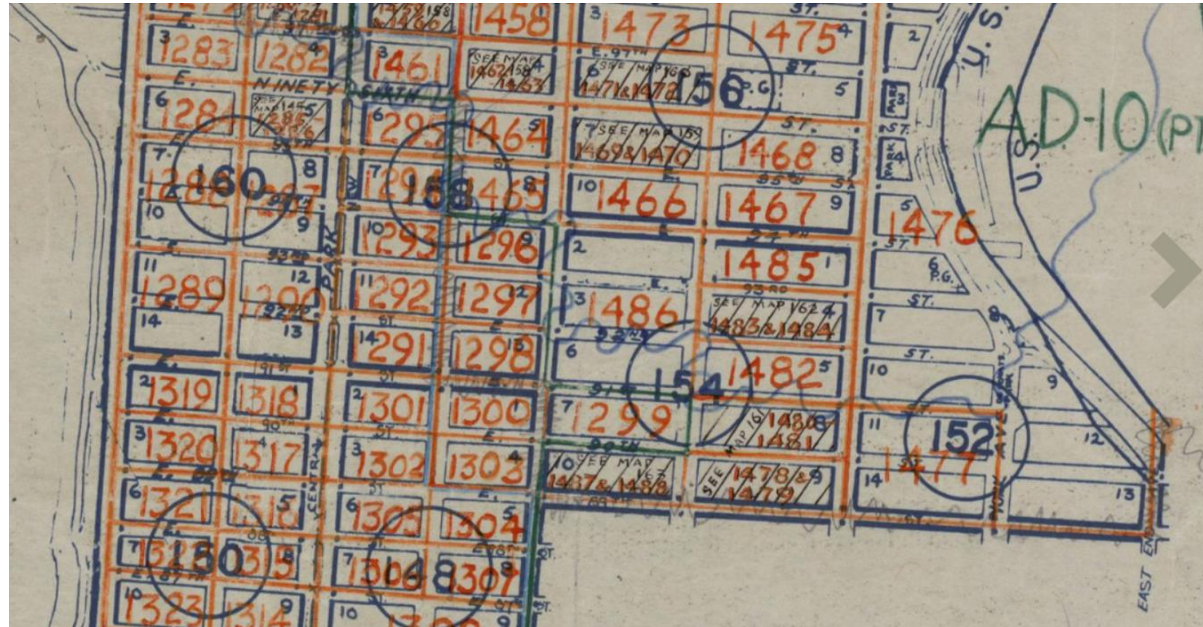
- Enumeration district (ED)- an area that could be covered by a single enumerator (census taker) in one census period (2-4 weeks)
- Beginning in 1930, EDs were identified by a two-part number consisting of a prefix (county or city designator) and a suffix (district number). Example: 103-4665 or 32-37
- ED boundaries defined by counties, cities, townships, wards, roads, railroads, waterways, large properties (parks, cemeteries, prisons)
 - EDs stay within political boundaries, such as county and city limits
- ED boundaries and numbers often change from one census to another



[NAID 214451610](#)

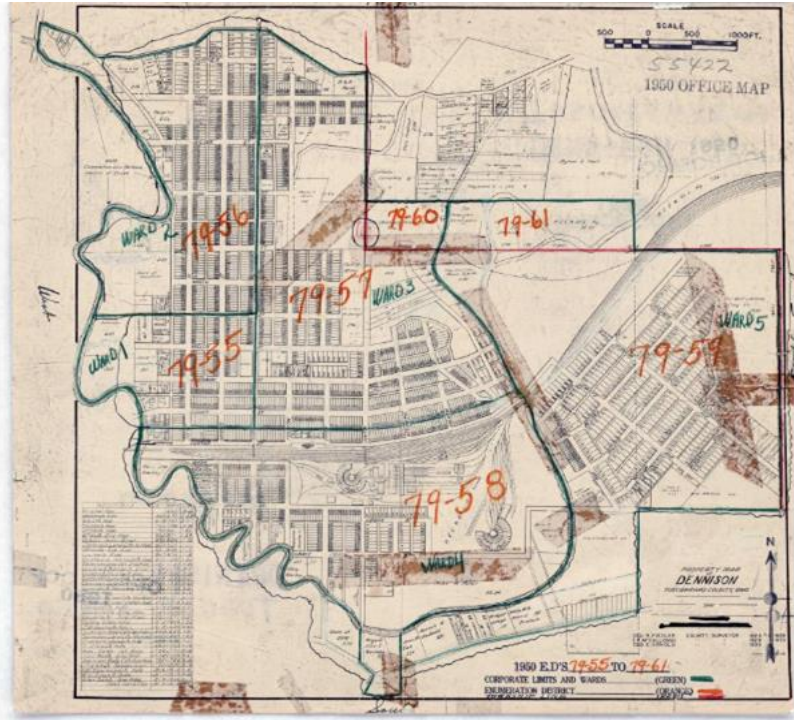
Enumeration District Example – Urban Areas

1950 ED Map of Manhattan, New York



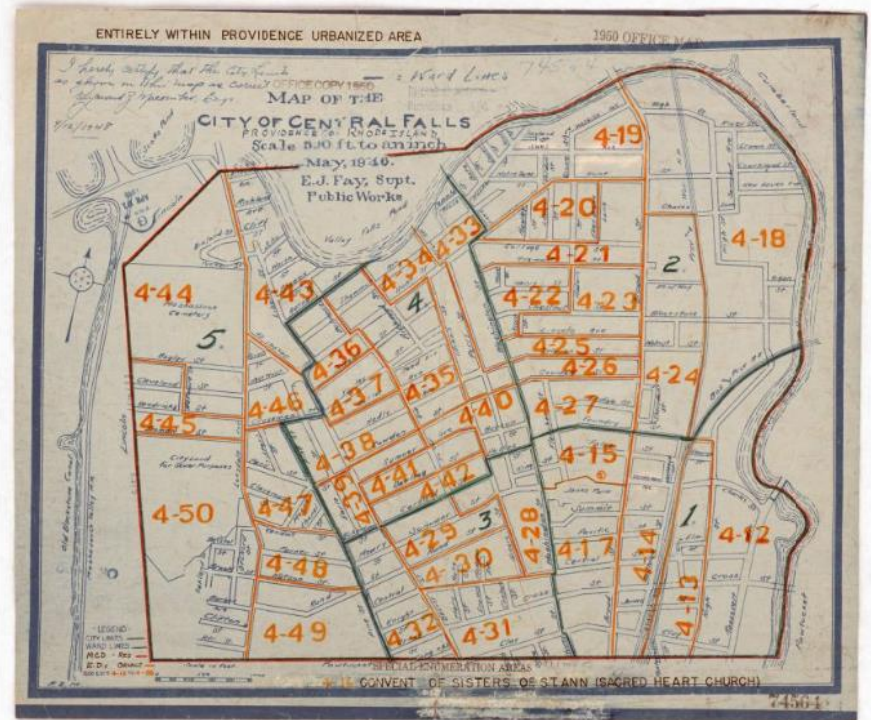
[NAID 24267411](#)

Enumeration District Example – Smaller Urban Areas



1950 Census ED Map for Dennison, Ohio

[NAID 29904542](#)

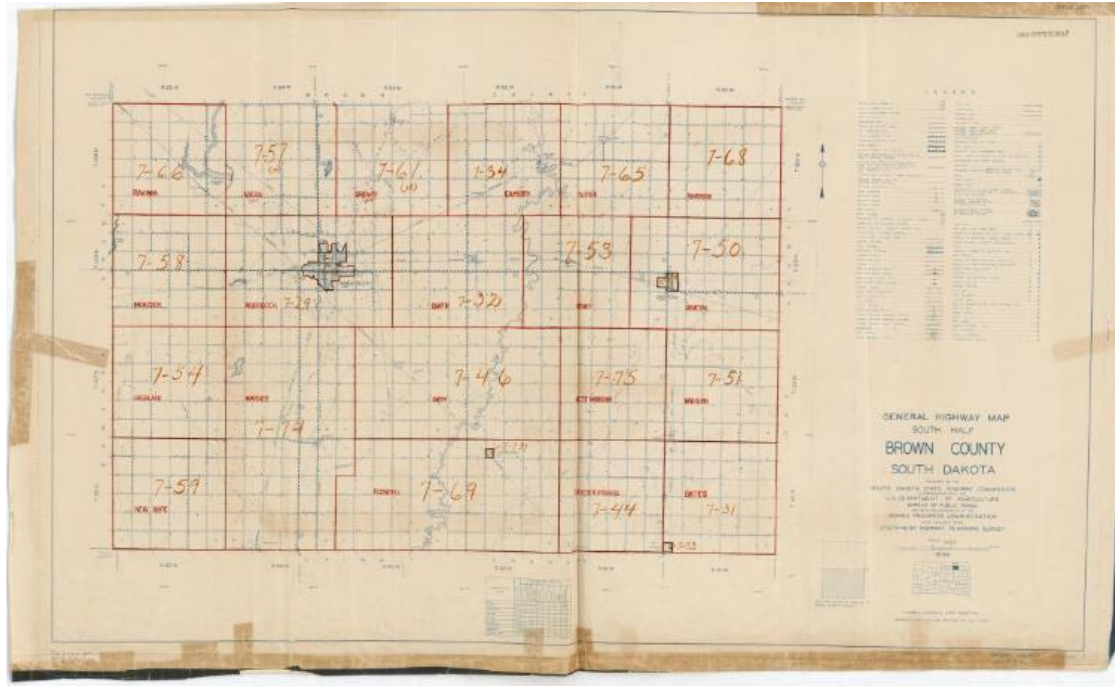


1950 Census ED Map Central Falls, Rhode Island

[NAID 176246298](#)

Enumeration District Examples – Rural Areas

1950 ED Map of Brown County, SD



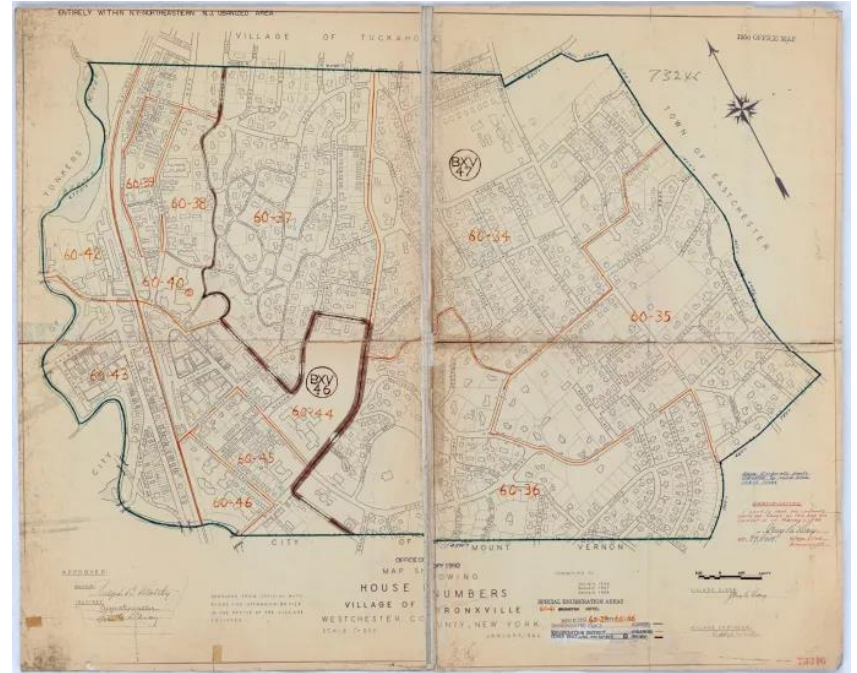
[NAID 40038055](#)

Enumeration District Examples – Bronxville, NY

1940 and 1950 Census ED Map of Bronxville, NY



[NAID 5835867](#)



[NAID 24737299](#)



Why are Enumeration Districts Helpful to Researchers?

- The census is organized by enumeration district (ED)
- Knowing where a person lived and the ED number for that area can help narrow down a search
 - Name indexes are often inaccurate
 - Names may have been misspelled by the census enumerator
 - Many individuals in the same city with common names
- Knowing the ED number also allows a researcher to look up who lived at a specific location without needing to first know a name

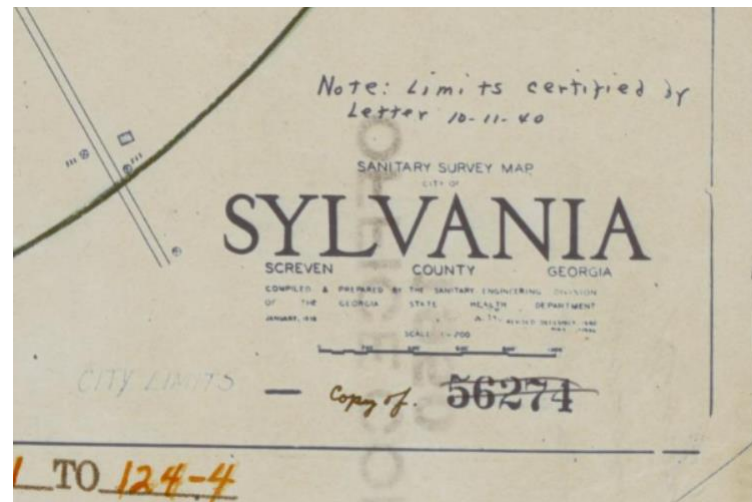
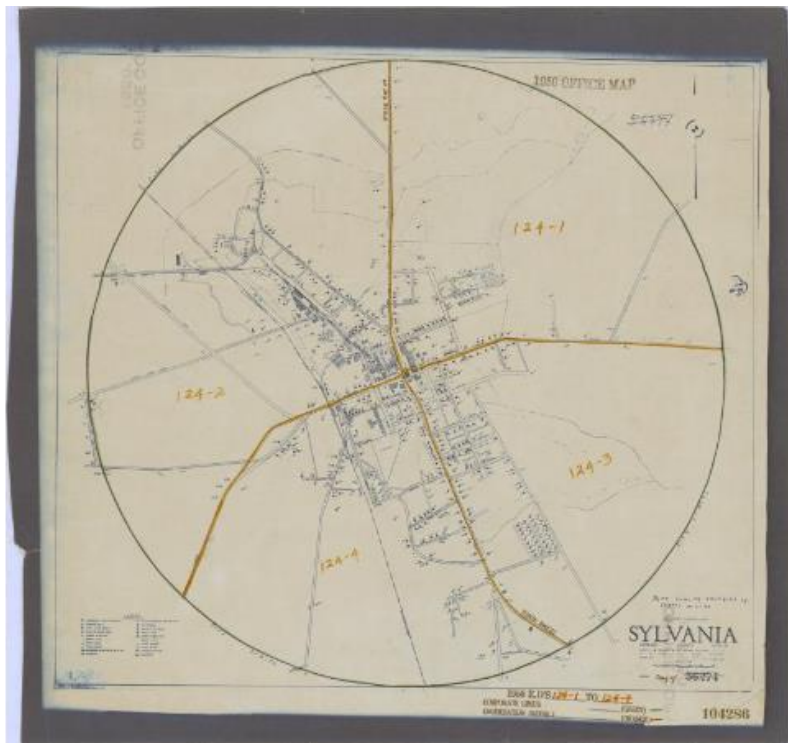
Enumeration District Maps

- ED maps can be used to locate the ED number for a specific location
- ED maps were created by the Census Bureau using base maps
 - Examples: soil survey maps, state, city or county government maps, chamber of commerce maps, highway maps, commercial maps, and many others
- Base maps were annotated using colored pencils or crayons to show enumeration district numbers and boundaries



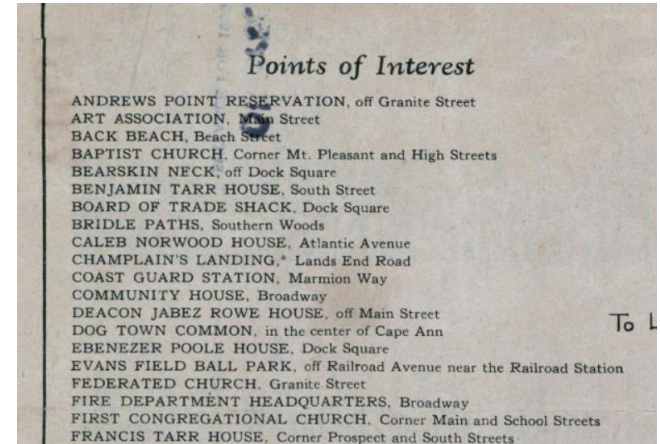
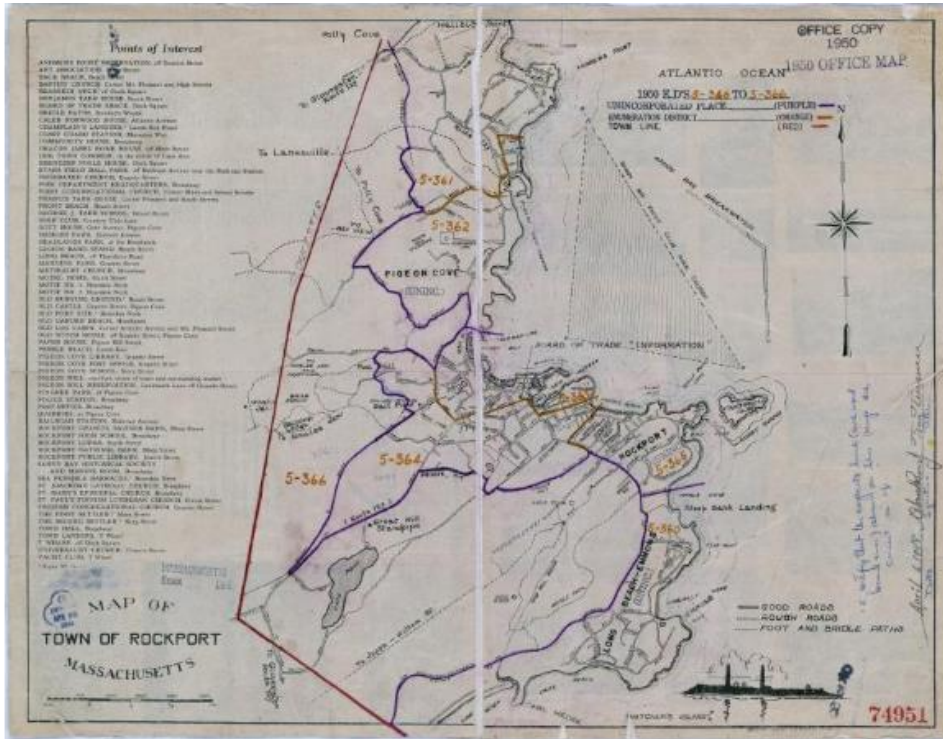
A portion of the 1950 Census
ED Map of Findlay, Ohio
showing annotations
[NAID 26128446](#)

Base Map Example – Sanitary Survey Map



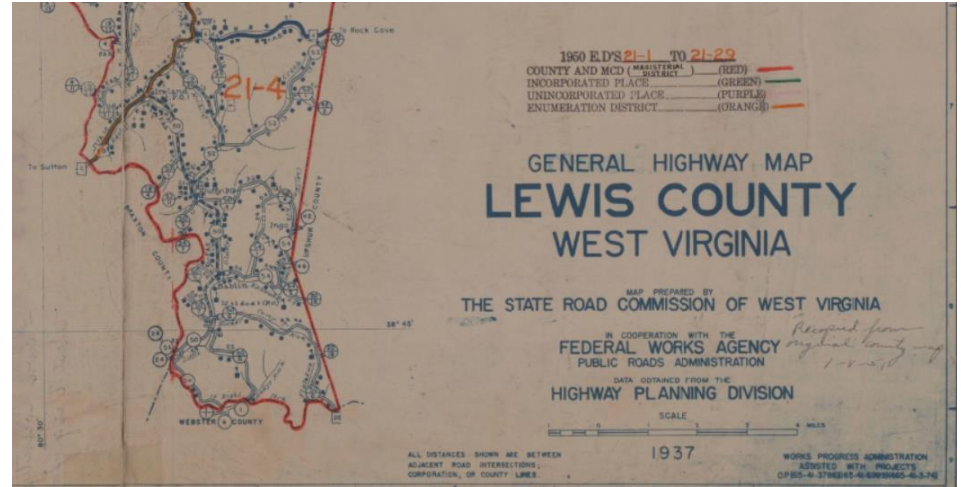
1950 Census ED Map of Sylvania, GA
Base map is a sanitary survey map
[NAID 12008050](https://www.nationalarchives.gov.uk/details.aspx?id=12008050)

Base Map Example – Local Map



1950 Census ED Map of
Rockport, MA
Base maps lists local points
of interest
[NAID 12171745](#)

Base Map Example – General Highway Map

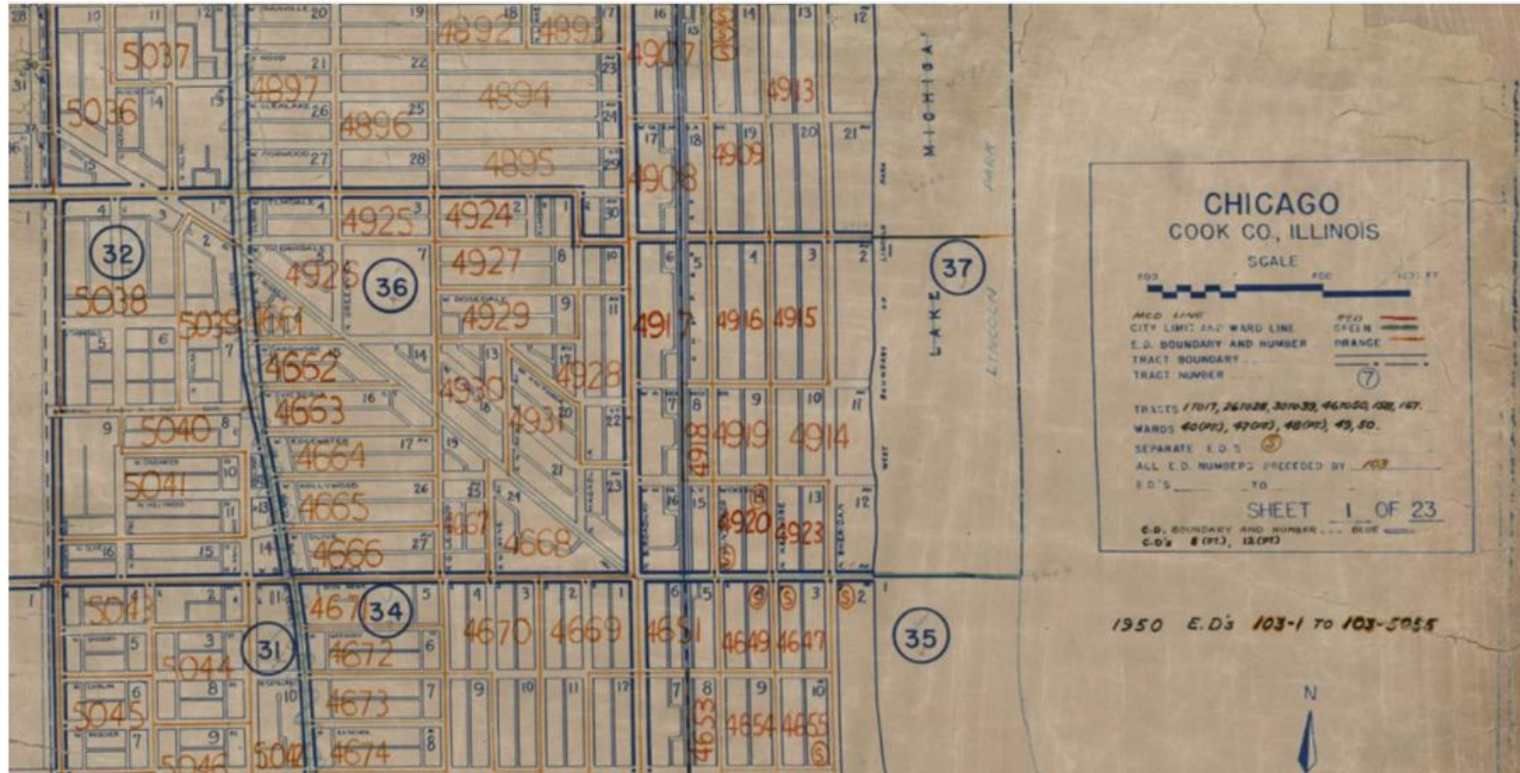


1950 ED Map of Lewis County, WV
[NAID 75639258](#)

Enumeration District Maps

- Map annotations include the two-part ED number consisting of a prefix (city or county identifier) and suffix (district identifier)
 - Example from Findlay, OH map is 32-30
 - Sometimes had an additional alpha suffix (example 57-130A) but this is typically not shown on maps
- On city maps, the prefix may not be written out for every ED
 - Prefix is included on first page or in map legend
 - Prefix for large cities is different from surrounding county
- Be sure to note the complete two-part number when researching

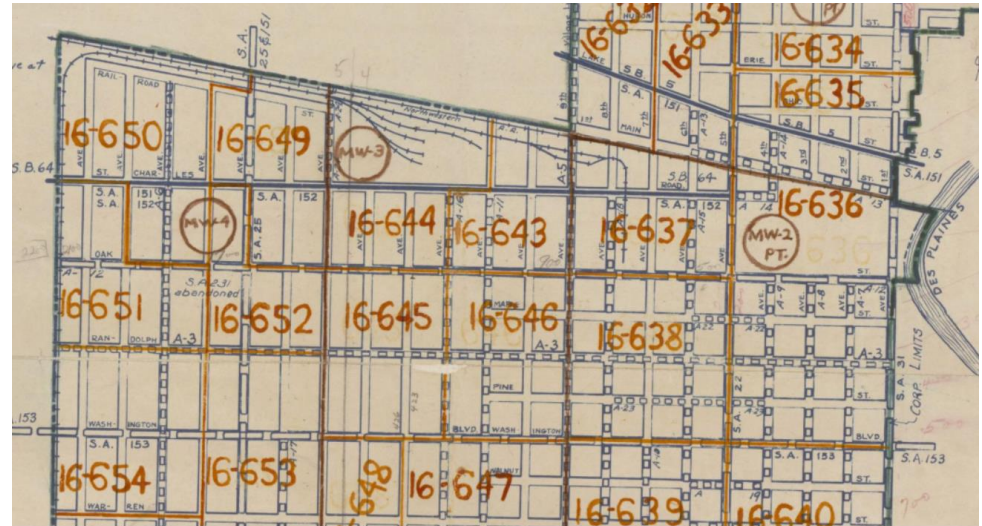
Example: EDs in Large Cities



1950 ED Map of
Chicago, Cook
County, IL
Sheet 1 of 23
[NAID 12031579](https://naid.12031579)

Note city prefix
is 103

Example: EDs with County Prefix



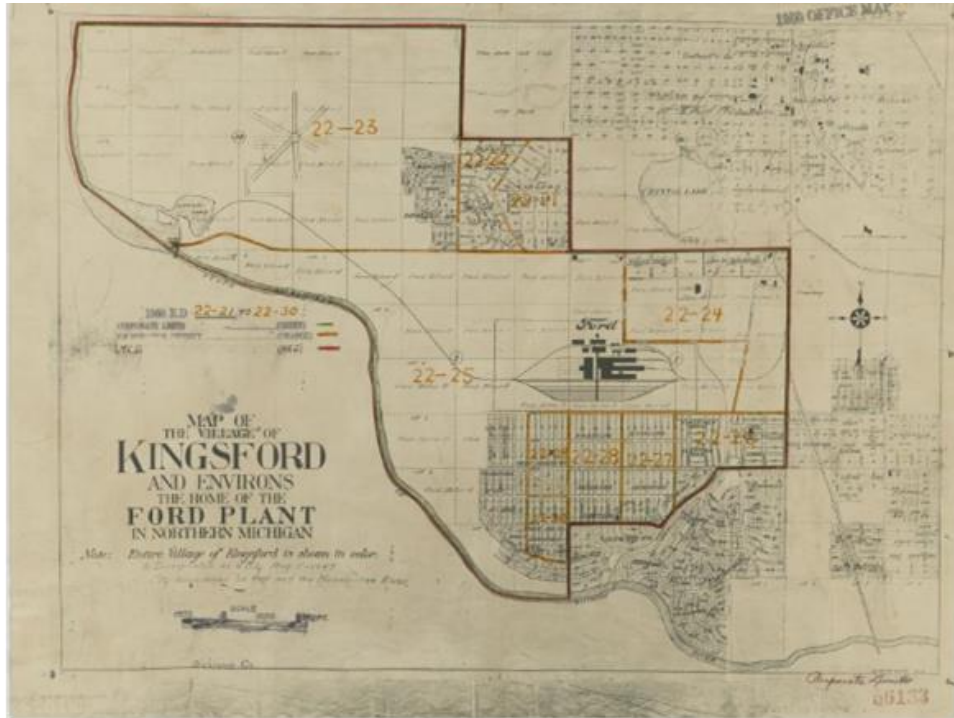
1950 Census ED Maps for
Maywood, Cook County, IL
[NAID 12013493](#)
Note county prefix is 16



Why Else are ED Maps Useful?

- Show what an area looked like around the time of the census
- Provide additional context
- Source for maps of counties, cities, towns, or other areas
- Can show local landmarks, structures, property owners, businesses, cemeteries, roads, railroads, other features

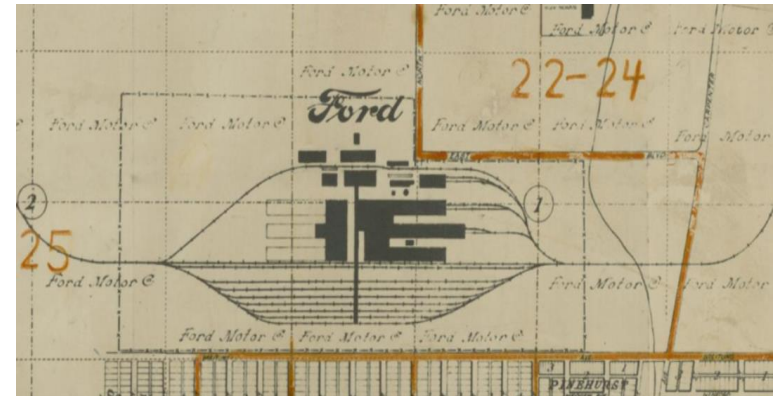
Example Showing Local Landmarks



1950 Census ED Map for Kingsford, MI

“Home of the Ford Plant in Northern Michigan”

[NAID 16684792](https://www.nationalarchives.gov.uk/details.aspx?id=16684792)

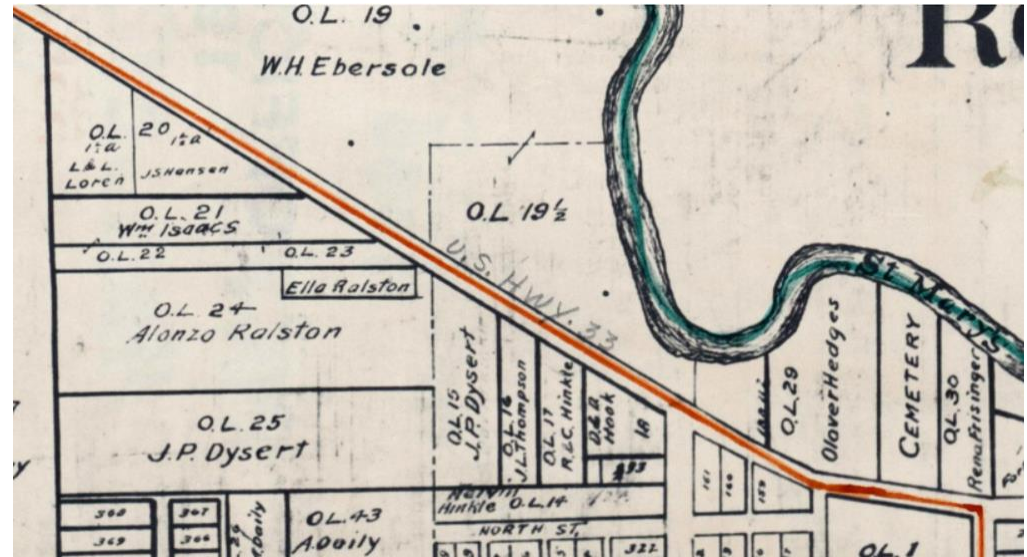


Example Showing Property Owners



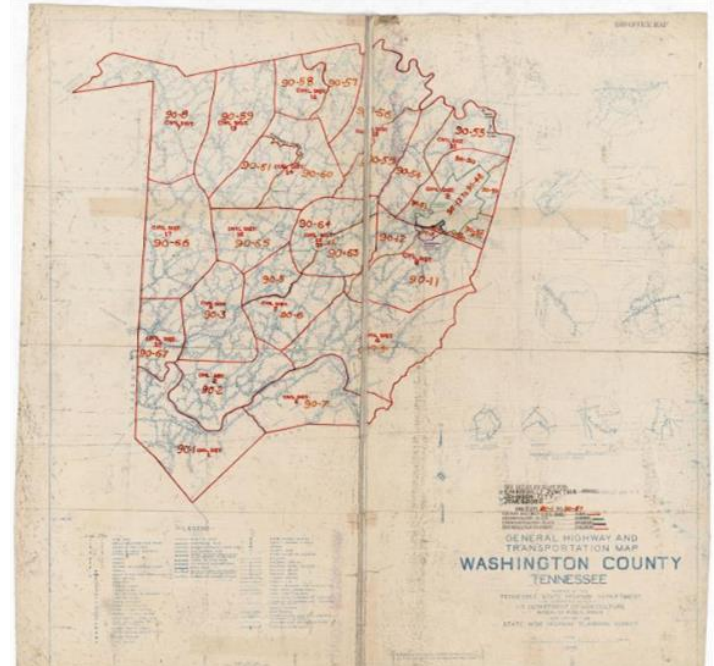
1950 Census ED Map for Rockford, Ohio

[NAID 26421395](#)



Limitations of ED Maps

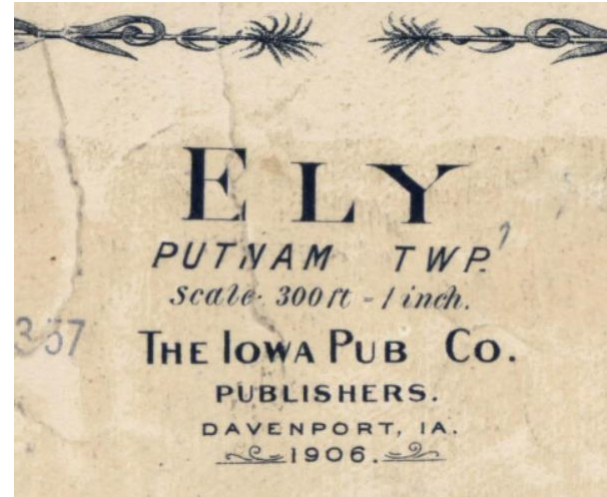
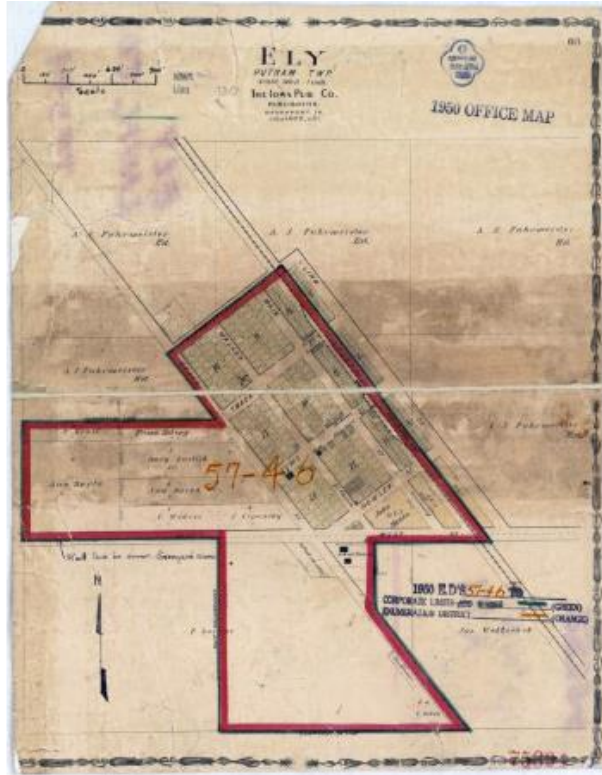
- Maps may have condition issues that obscure information
- Base maps may be out of date
- Base maps may be planning maps that show roads or features never built
- Maps often do not show individual streets, especially in rural areas
- Smaller cities may not have their own map if they have fewer than 5 EDs
- Compiled maps sometimes contain inaccurate information or typos



1950 ED Map of Washington County, TN

[NAID 44271020](#)

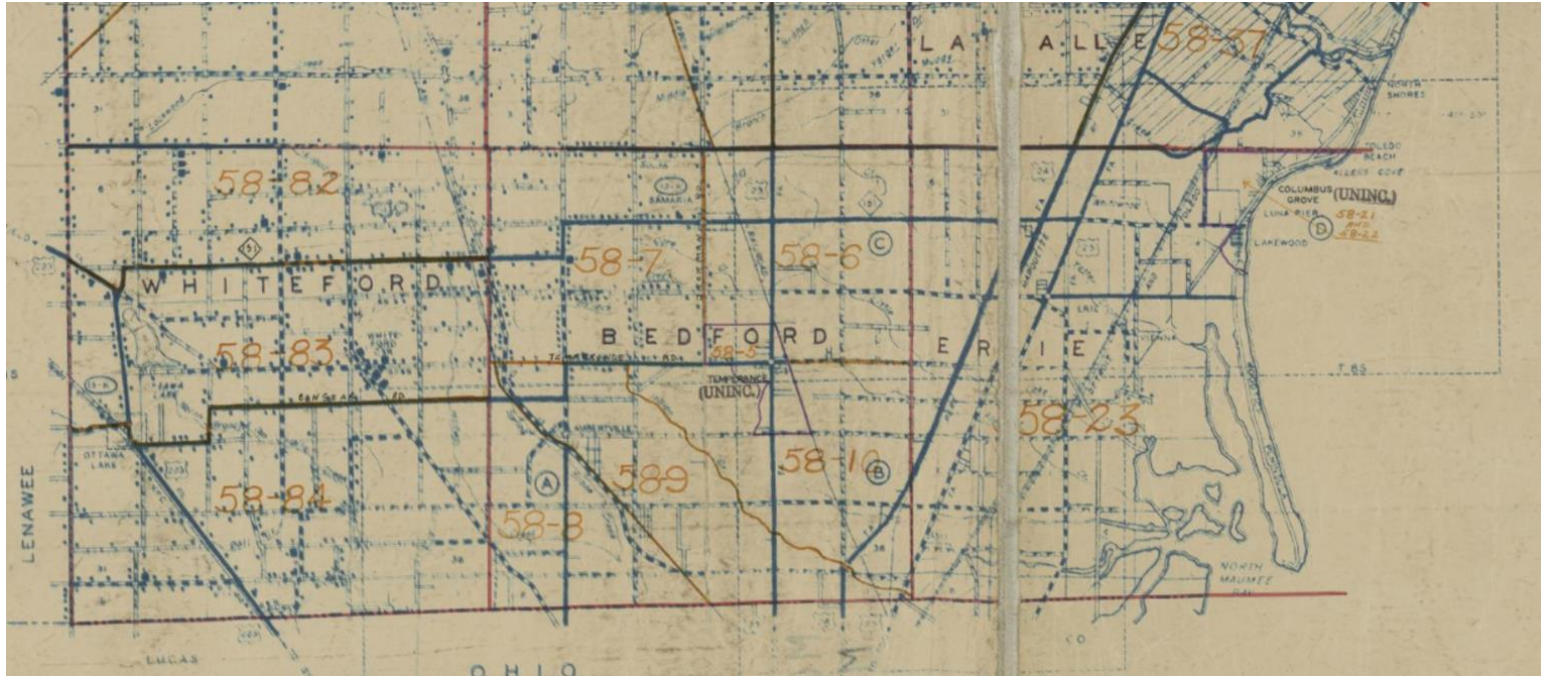
Limitations of ED Maps – Older Maps



1950 Census ED Map of Ely, Iowa
Base map dates from 1906

[NAID 12008237](https://www.nationalarchives.gov.uk/details.aspx?id=12008237)

Limitations of ED Maps – Lack of Detail



1950 ED Map of
Monroe County,
MI
[NAID 16870195](https://www.nationalarchives.gov/ed/naid/16870195)

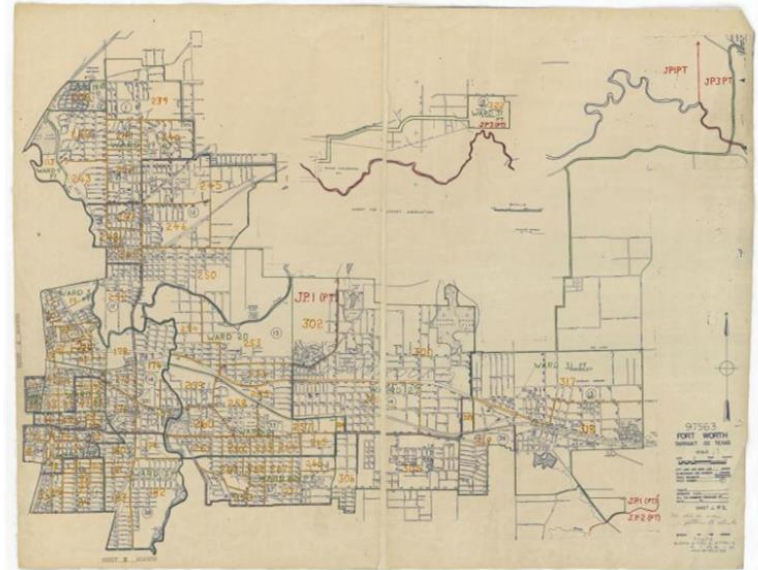


Changes to Enumeration Districts

- Some planned EDs were subdivided when populations proved to be larger than expected and needed more enumerators to complete the census
- Split EDs are denoted by an alpha-suffix (261-1A, 261-1B)
- ED maps do not typically show split EDs
- ED descriptions list split EDs

Fort Worth: A Special Case of Split EDs

- 1950 Census recruited teachers to serve as enumerators
- High teacher participation in Fort Worth allowed for EDs to be subdivided into smaller sections



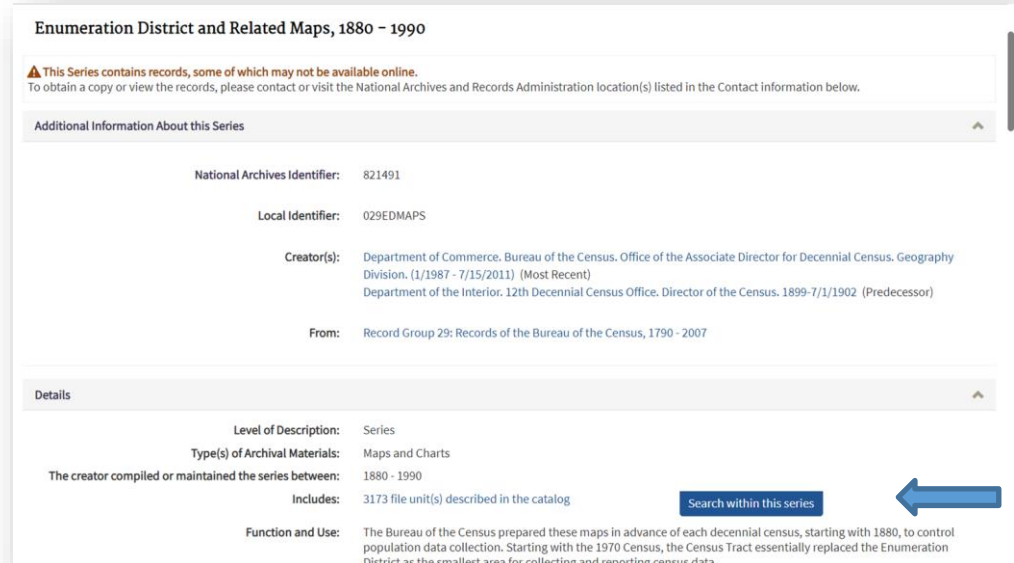
1950 ED Map of Fort Worth, TX (1 of 5)
Map shows original EDs
[NAID 48302387](#)

Fort Worth: A Special Case of Split Eds (continued)

State County		Texas Ft. Worth city 261, Tarrant County 220 (Name) (Code)		1950 S. D.	Page 45		
1950 E. D.	DESCRIPTION OF ENUMERATION DISTRICT	1950 Pop.	1940 CENSUS				
			DWELLING UNITS	POPULATION	FARMS (Approx.)		
261-94 A B	Ft. Worth city - That part of Ward 8 (Tract 30 - part) in Justice Precinct 1 Bounded by W. Rosedale 6th Ave. W. Magnolia 8th Ave. This E.D. consists of the following blocks: 25 28 31 26 29 32 27 30	624					
261-95 A B C	Ft. Worth city - That part of Ward 8 (Tract 30 - part) in Justice Precinct 1 Bounded by W. Magnolia S. Lake W. Myrtle 8th Ave. This E.D. consists of the following blocks: 50 54 57 51 55 58 52 56 59 53	642					

How to Locate and Access Census ED Maps

- ED maps are held by the Cartographic Branch, National Archives at College Park, MD
- Most 1940 and 1950 maps are available through the National Archives Catalog
- [RG 29, Enumeration District and Related Maps, 1880 – 1990 \(NAID 821491\)](#)
- Use “Search within this series” option to search for a specific census year and/or location



Enumeration District and Related Maps, 1880 – 1990

⚠ This Series contains records, some of which may not be available online.
To obtain a copy or view the records, please contact or visit the National Archives and Records Administration location(s) listed in the Contact information below.

Additional Information About this Series

National Archives Identifier: 821491

Local Identifier: 029EDMAPS

Creator(s): Department of Commerce, Bureau of the Census, Office of the Associate Director for Decennial Census, Geography Division. (1/1987 - 7/15/2011) (Most Recent)
Department of the Interior, 12th Decennial Census Office, Director of the Census. 1899-7/1/1902 (Predecessor)

From: Record Group 29: Records of the Bureau of the Census, 1790 - 2007

Details

Level of Description: Series

Type(s) of Archival Materials: Maps and Charts

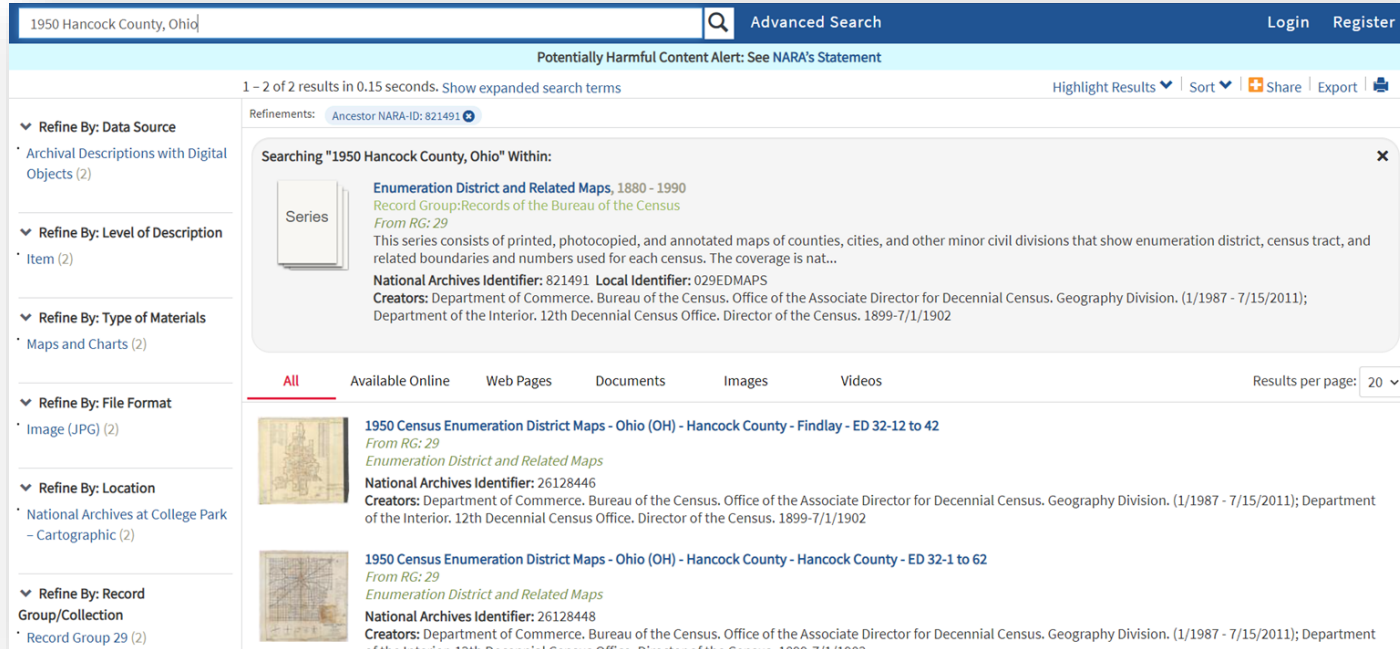
The creator compiled or maintained the series between: 1880 - 1990

Includes: 3173 file unit(s) described in the catalog

Function and Use: The Bureau of the Census prepared these maps in advance of each decennial census, starting with 1880, to control population data collection. Starting with the 1970 Census, the Census Tract essentially replaced the Enumeration District as the smallest area for collecting and reporting census data.

[Search within this series](#)

How to Access Census ED Maps



1950 Hancock County, Ohio [Advanced Search](#) [Login](#) [Register](#)

Potentially Harmful Content Alert: See NARA's Statement

1 - 2 of 2 results in 0.15 seconds. Show expanded search terms [Highlight Results](#) [Sort](#) [Share](#) [Export](#)

Refinements: [Ancestor NARA-ID: 821491](#)

Searching "1950 Hancock County, Ohio" Within: ✕

Series

Enumeration District and Related Maps, 1880 - 1990
Record Group: Records of the Bureau of the Census
From RG: 29
 This series consists of printed, photocopied, and annotated maps of counties, cities, and other minor civil divisions that show enumeration district, census tract, and related boundaries and numbers used for each census. The coverage is nat...
National Archives Identifier: 821491 **Local Identifier:** 029EDMAPS
Creators: Department of Commerce. Bureau of the Census. Office of the Associate Director for Decennial Census. Geography Division. (1/1987 - 7/15/2011); Department of the Interior. 12th Decennial Census Office. Director of the Census. 1899-7/1/1902

All Available Online Web Pages Documents Images Videos Results per page: 20

1950 Census Enumeration District Maps - Ohio (OH) - Hancock County - Findlay - ED 32-12 to 42
From RG: 29
Enumeration District and Related Maps
National Archives Identifier: 26128446
Creators: Department of Commerce. Bureau of the Census. Office of the Associate Director for Decennial Census. Geography Division. (1/1987 - 7/15/2011); Department of the Interior. 12th Decennial Census Office. Director of the Census. 1899-7/1/1902

1950 Census Enumeration District Maps - Ohio (OH) - Hancock County - Hancock County - ED 32-1 to 62
From RG: 29
Enumeration District and Related Maps
National Archives Identifier: 26128448
Creators: Department of Commerce. Bureau of the Census. Office of the Associate Director for Decennial Census. Geography Division. (1/1987 - 7/15/2011); Department of the Interior. 12th Decennial Census Office. Director of the Census. 1899-7/1/1902

Search Example: 1950 Hancock County, Ohio

How to Access Census ED Maps (continued)

Potentially Harmful Content Alert: See NARA's Statement

Share Export

Record Hierarchy

Record Group 29:
Records of the Bureau of the Census, 1790 - 2007

Series:
Enumeration District and Related Maps, 1880 - 1990

File Unit:
Enumeration District Maps - Ohio - Hancock County

Item:
1950 Census Enumeration District Maps - Ohio (OH) - Hancock County - Findlay - ED 32-12 to 42

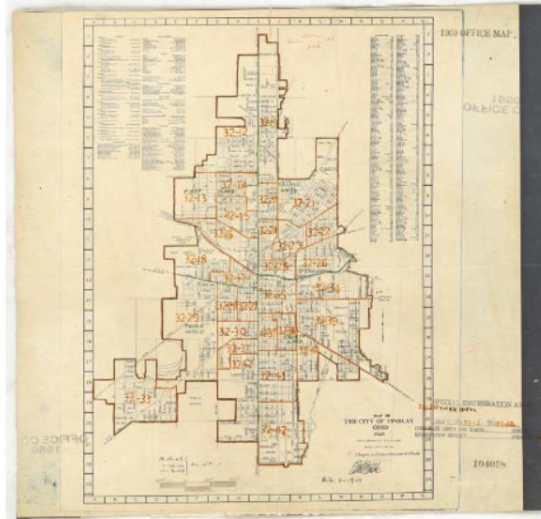
Tag

Add a tag...

Enter new tags...

Add

1950 Census Enumeration District Maps - Ohio (OH) - Hancock County - Findlay - ED 32-12 to 42



View/Add Contributions

Image 1 of 1

How to Access Census ED Maps – 1930 and earlier

- Some 1900–1930 maps are available through the National Archives Catalog, but the majority have not been digitized
- Paper maps may be viewed in person in the [Cartographic Research Room](#) at the National Archives at College Park
- Not all counties have maps for each pre-1940 censuses
- [PI 103 Preliminary Inventory of Cartographic Records of the Bureau of the Census](#) lists county coverage by year



1930 Census ED Map of Taylor County, FL
[NAID 148942534](#)

Enumeration District Descriptions

- Census Bureau also produced written ED descriptions
- 1950 written descriptions will be available in the National Archives Catalog soon
 - [RG 29, Enumeration District Descriptions, 1850 – 1950, NAID 721175](#)

DEPARTMENT OF COMMERCE
BUREAU OF THE CENSUS
Form No. 1-54

ENUMERATION DISTRICTS—1950 CENSUS

Ohio 32 1950 S. D. Page 2
Hancock (Cub)

1950 E. D.	DESCRIPTION OF ENUMERATION DISTRICT	1950 Pop.	1940 CENSUS		
			DWELLING UNITS	POPULATION	FARMS (Acres)
32-11	Eagle township	977	244	977	197
	Findlay city:			20280	
32-12	Findlay city - That part of Ward 1 Bounded by City limits N. Main Madison Ave. City limits	6193		666	
32-13	Findlay city - That part of Ward 1 Bounded by City limits, Madison Ave. Bolton Howard City limits	519			
32-14	Findlay city - That part of Ward 1 Bounded by Madison Ave. N. Main Fraser, N. Gory, Davis Bolton	615			
32-15	Findlay city - That part of Ward 1 Bounded by Davis, N. Gory, Fraser N. Main Lafayette Ave. Bolton	2899			

U. S. GOVERNMENT PRINTING OFFICE: 1949 O-10014



1950 Census Website and Additional Resources

- Enumeration District Maps and Enumeration District Descriptions will also be available through NARA's 1950 Census website
- Additional information and tips for searching ED maps and descriptions are available on the National Archives website: www.archives.gov/research/census/1950/finding-aids



Feedback

We value your opinion.

Please take a minute to complete a short evaluation. Your comments help us maintain the quality of our services and plan future programs.

Thank you!

Event Evaluation:

www.surveymonkey.com/r/KYREventEval





After the broadcast . . .

Email questions to
carto@nara.gov

Video recordings of lectures and
downloadable handouts
will remain online at

www.archives.gov/calendar/genealogy-series/2022





KNOW YOUR RECORDS

National Archives and Records Administration

Educational resources on how to access and do research using U.S. federal government records held at the National Archives and Records Administration.

Know Your Records

www.archives.gov/calendar/know-your-records

Videos and Handouts on **You Tube**



Thank You Genealogy Series Team!

Presenters

Claire Kluskens

Brandi Oswald

Michael L. Knight

Cody White

Jessie Kratz

Sharon Tosi Lacey

Christopher Martin

Production

Alexis Van Dyke

Amber Forrester

Andréa Matney

Brian Cipperly

Jamie Atkinson

Jason Winston

Julie Reid

Vernon Smith

Publicity

Erin Townsend

Hilary Parkinson

Laura Sheehan

Mary Ryan

Robin Waldman

Victoria Blue





Questions & Answers in Chat

Please stay if you have questions.

Although this concludes the video portion of the broadcast, we will continue to take your questions in **chat** for another 10 minutes.

